

BOUNDARY AND TOPOGRAPHY SURVEY

A PORTION OF SE 1/4, NW 1/4 SECTION 27, TOWNSHIP 28 N., RANGE 4, W.M.

LEGEND

(NOTE: NOT ALL SYMBOLS MAY APPEAR ON MAP)

- SET LINE MARKER 1/2" REBAR W/YELLOW PLASTIC CAP (LS#50711)
- FOUND MONUMENT (AS NOTED)
- SET 1/2" REBAR W/YELLOW PLASTIC CAP (LS#50711)
- ✕ SET TACK WITH SHINER #50711
- UTILITY POLE
- ✕ YARD LIGHT
- UTILITY POLE WITH LUMINAIRE
- POWER METER
- WATER METER
- HYDRANT
- WATER VALVE
- CATCH BASIN
- SANITARY SEWER MANHOLE
- GAS VALVE
- GAS METER
- APPROX. GAS LINE LOCATION
- W- APPROX. WATER LINE LOCATION
- S- APPROX. SANITARY SEWER LINE LOCATION
- SD- APPROX. STORM DRAINAGE LINE LOCATION
- OH- APPROX. OVERHEAD UTILITY LINE LOCATION
- (M) MEASURED DIMENSION
- (P) PLAT DIMENSION
- (C) CALCULATED DIMENSION
- DECIDUOUS TREE
- ★ CONIFEROUS TREE

DATUM

VERTICAL DATUM IS ASSUMED @ 100.00' @ NAIL SET IN ASPHALT SIDEWALK, 2' FT. SOUTH OF FACE OF CURB, NEAR NORTHWESTERLY CORNER OF SITE.

BASIS OF BEARINGS

CENTERLINE HARBOR POINTE BOULEVARD SW BETWEEN FOUND MONUMENTS TAKEN AS S65°58'40"W - PER THE PLAT OF EVERGREEN MANOR, RECORDED ON PAGE 42, VOLUME 13, OF PLATS, RECORDS OF SNOHOMISH COUNTY, WASHINGTON.

REFERENCES

- PLAT OF EVERGREEN MANOR, VOLUME 13, PAGE 42.
- PLAT OF EVERGREEN MANOR 2, VOLUME 13, PAGE 64.

NOTES

INSTRUMENTATION FOR THIS SURVEY WAS A SOKKIA SRX ROBOTIC TOTAL STATION.

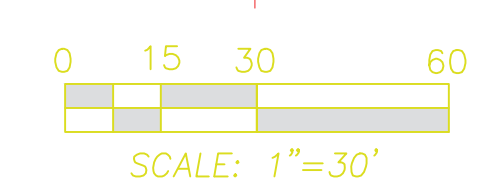
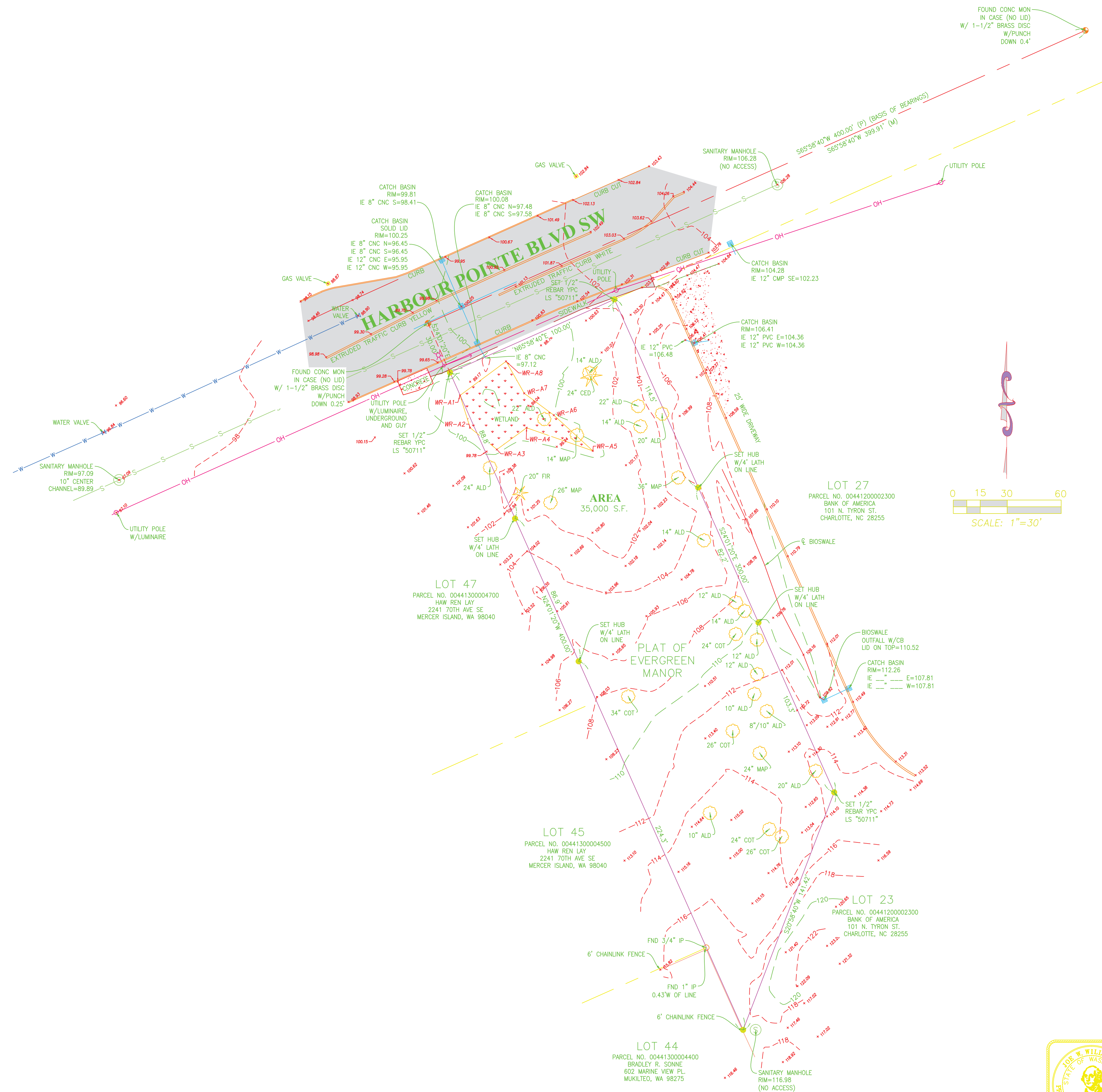
PROCEDURES USED WERE FIELD TRAVERSE, MEETING OR EXCEEDING STANDARDS SET BY WAC 332-130-090

THIS SURVEY WAS PERFORMED WITHOUT THE BENEFIT OF A TITLE REPORT AND DOES NOT PURPORT TO SHOW ALL EASEMENTS OF RECORD, OR OTHERWISE IF ANY.

ALL UTILITIES SHOWN WERE DERIVED FROM PHYSICAL LOCATIONS ON THE GROUND SURFACE AT TIME OF SURVEY. CONTRACTOR TO VERIFY PRIOR TO ANY EXCAVATION.

LEGAL DESCRIPTION

LOT 28, EVERGREEN MANOR, ACCORDING TO THE PLAT THEREOF RECORDED IN VOLUME 13 OF PLATS, PAGE 42, RECORDS OF SNOHOMISH COUNTY, WASHINGTON. SITUATE IN THE COUNTY OF SNOHOMISH, STATE OF WASHINGTON



Revision
Title: **BOUNDARY AND TOPOGRAPHY SURVEY**

No. _____ Date _____ By _____ Cld. _____ Appr. _____
For: ICOM
5500 HARBOR POINTE BLVD
UNIT R104
MUKILTEO, WA 98275

Scale: Horizontal 1"=30' Vertical N/A
Designed: _____ Drawn: _____ Checked: _____ Approved: _____ Date: 3/12/14

ALL Land Surveying
Joe Willis, PLS
1317 MAPLE AVE.
SNOHOMISH, WA 98290
PHONE: (360) 568-4031
CELL: (360) 722-1849

Job Number 14514
SHEET
1 of 2