

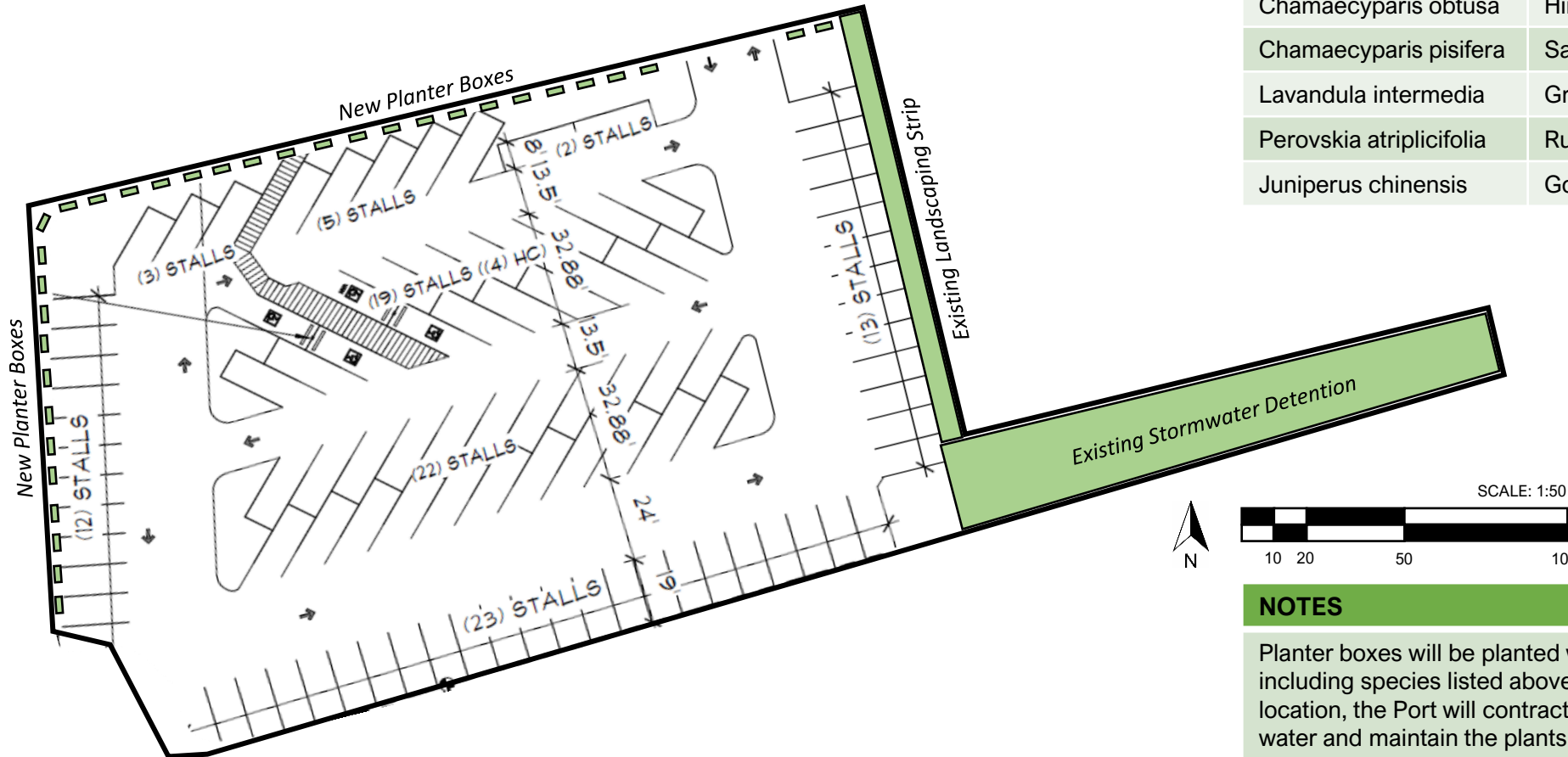
# LANDSCAPE PLAN

## MUKILTEO INTERIM COMMERCIAL PARKING LOT



Received by Email

1/3/2023

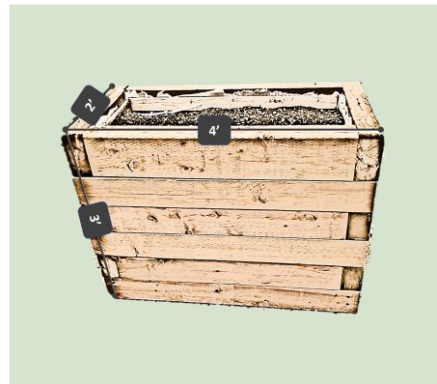


### LANDSCAPING DETAILS

|                                    |                        |
|------------------------------------|------------------------|
| Existing Landscaping Strip         | 500 sf (approximate)   |
| Existing Stormwater Detention Area | 3,000 sf (approximate) |
| New Planter Boxes (34)             | 300 sf (approximate)   |

| SPECIES                  | COMMON NAME             | QUANTITY |
|--------------------------|-------------------------|----------|
| Nandina domestica        | Heavenly bamboo         | 10-20    |
| Chamaecyparis obtusa     | Hinoki cypress          | 10-20    |
| Chamaecyparis pisifera   | Sawara cypress          | 10-20    |
| Lavandula intermedia     | Grosso English lavender | 10-20    |
| Perovskia atriplicifolia | Russian sage            | 10-20    |
| Juniperus chinensis      | Gold Coast juniper      | 10-20    |

### PLANTER BOX DETAIL



### NOTES

Planter boxes will be planted with drought tolerant perennials including species listed above. Since there is no water at this location, the Port will contract with a landscape company to haul in water and maintain the plants throughout the year. Plant species may be substituted due to availability and/or professional recommendations upon Port approval.