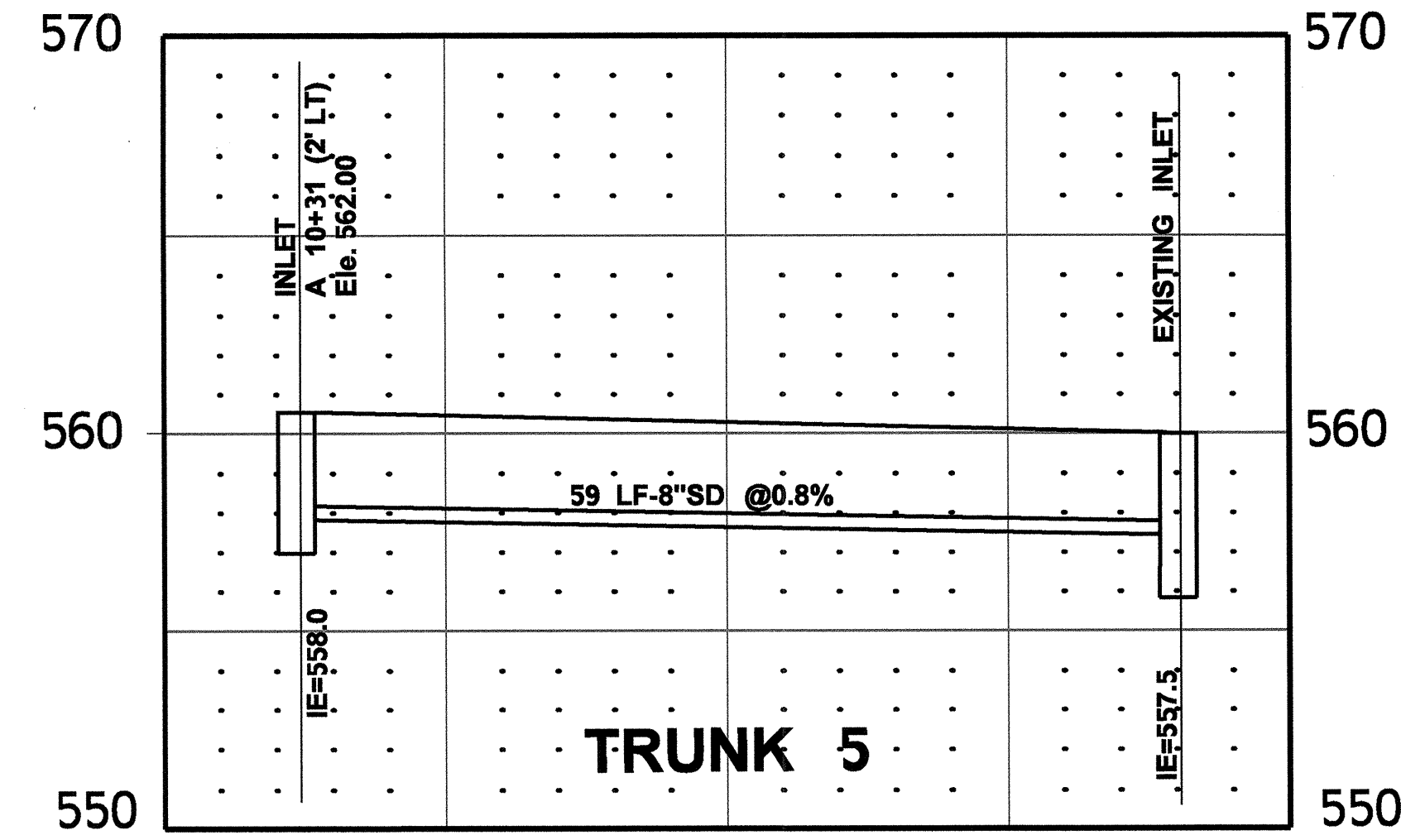
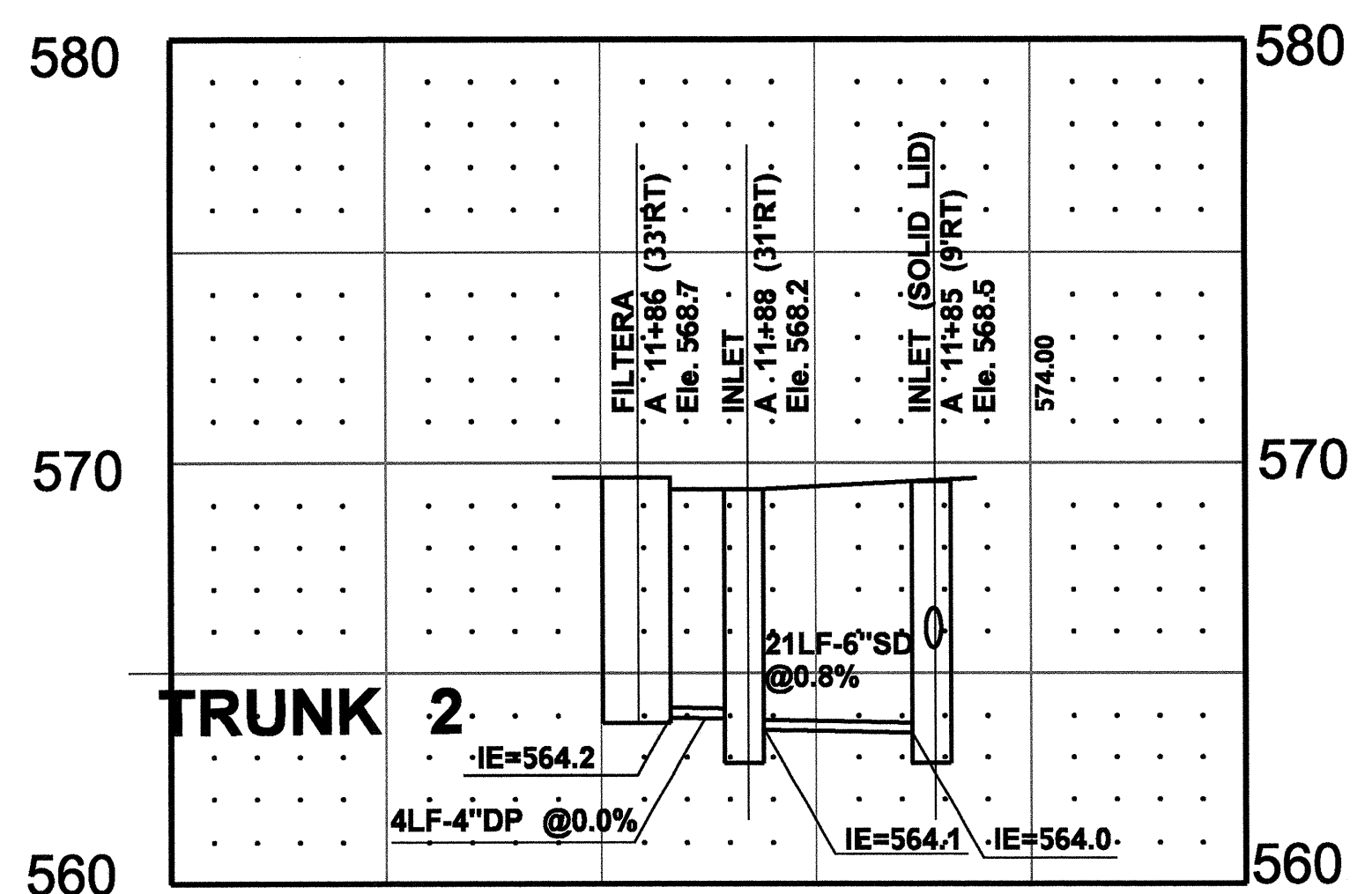
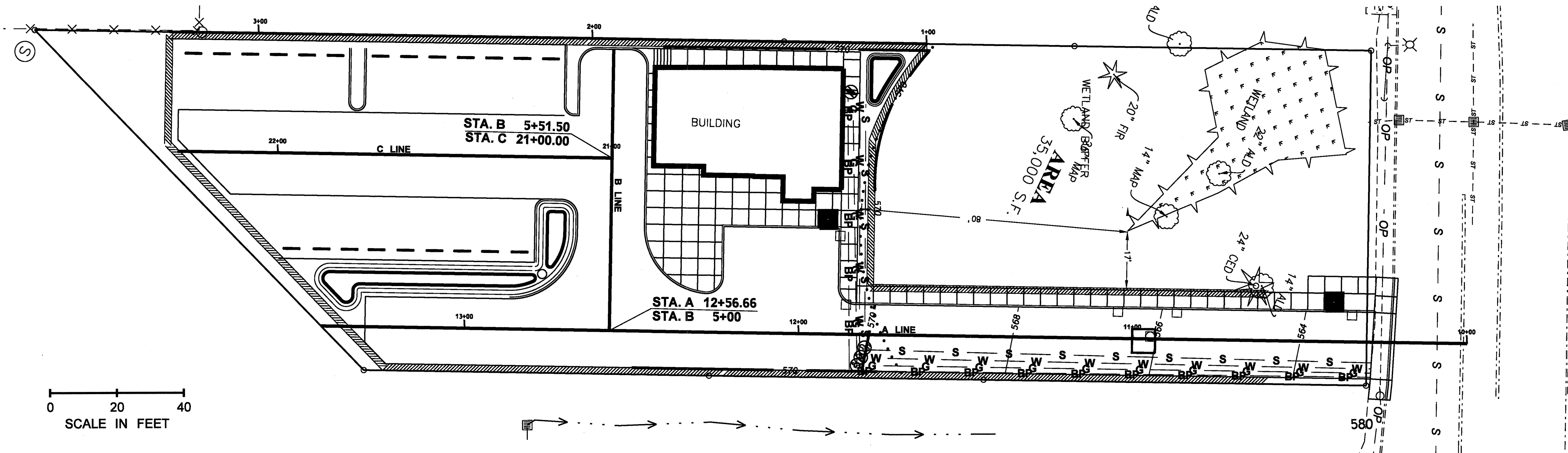
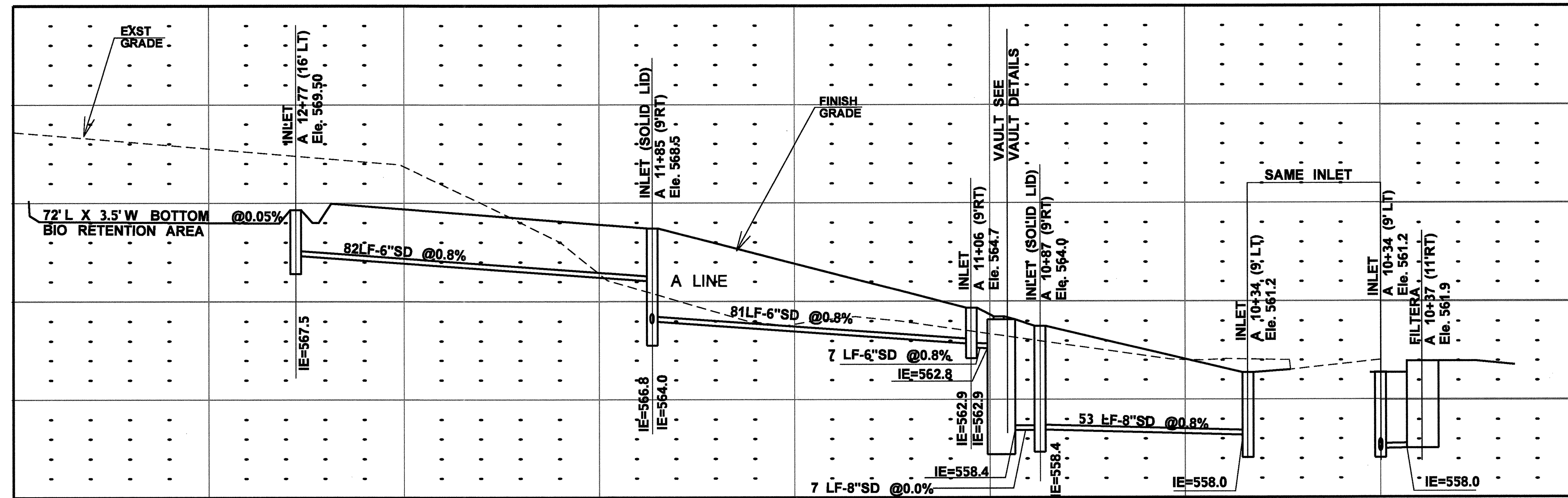
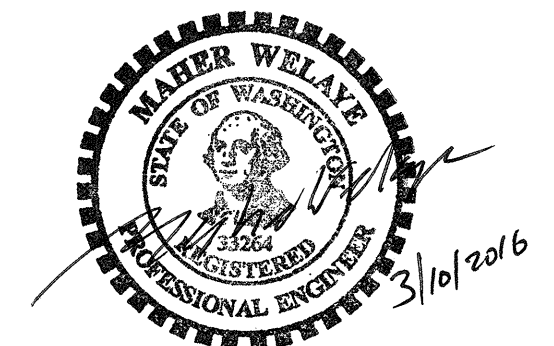


A PORTION OF SE 1/4, OF THE NW 1/4, SECTION 27, TOWNSHIP 28 N, RANGE 4, W.M.



PROPOSED UNDER GROUND UTILITY:

- W - WATER LINE
- G - GAS LINE
- BP - PWER LINE
- S - SANATER SEWER LINE



DESIGN BY: M. WALLAIA	REVISION	DATE	BY
DRAWN BY: M. WALLAIA			
CHECKED BY: M. WELAYE			
DATE: Feb. 20 2016			
JOB NO. 3935			

ICOM UTILITIES PLAN
 PERMIT # _____
 CITY OF MUKILTEO SNOHOMISH COUNTY

JOB NO. 3

SC
 AS
 SI