

FATAH BOUALALLAH, ARCHITECT
 5333 150 PL SW EDMONDS WA 98026
 PHONE: 425-268-3883
 EMAIL: FBARCHITECTS@FRONTIER.COM

**PROPOSED SITE PLAN AND PARKING
 ICOM-ISLAMIC CENTER OF MUKILTEO**
 200 HARBOUR POINT BLVD SW, MUKILTEO, 98275

SITE PLAN
 LANDSCAPING PLAN

NO	REVISION	DATE
1		
3		
2		

NO	ISSUED TO	DATE
1	City of Mukilteo/Lik Review	3/11/16
2		
3		

DRAWN BY: fb
 CHECKED BY:
 DATE: 08/08/15

PROJECT NUMBER:
 SHEET NUMBER:

SPI

BUILDING CODE INFORMATION
 DESCRIPTION OF PROJECT: A1 - MOSQUE
 ISLAMIC CENTER OF MUKILTEO-ICOM

PARCEL NUMBER: 00441200002800

LEGAL DESCRIPTION:

THE PROPERTY IS LOCATED AT 200 HARBOUR POINT BLVD SW MUKILTEO, 98275 WITHIN THE SE 1/4 OF THE NW 1/4 SECTION 27, TOWNSHIP 28 N, RANGE 4, WM IN IN THE CITY OF MUKILTEO SNOHOMISH COUNTY, WA.

ZONING: CB(S) COMMERCIAL
 (ADJACENT PARCELS HAVE THE SAME ZONING DESIGNATION)

BUILDING CODES: WA BUILDING CODES (IBC, IPC, IMC, 2012)
 WA STATE ENERGY CODES 2012

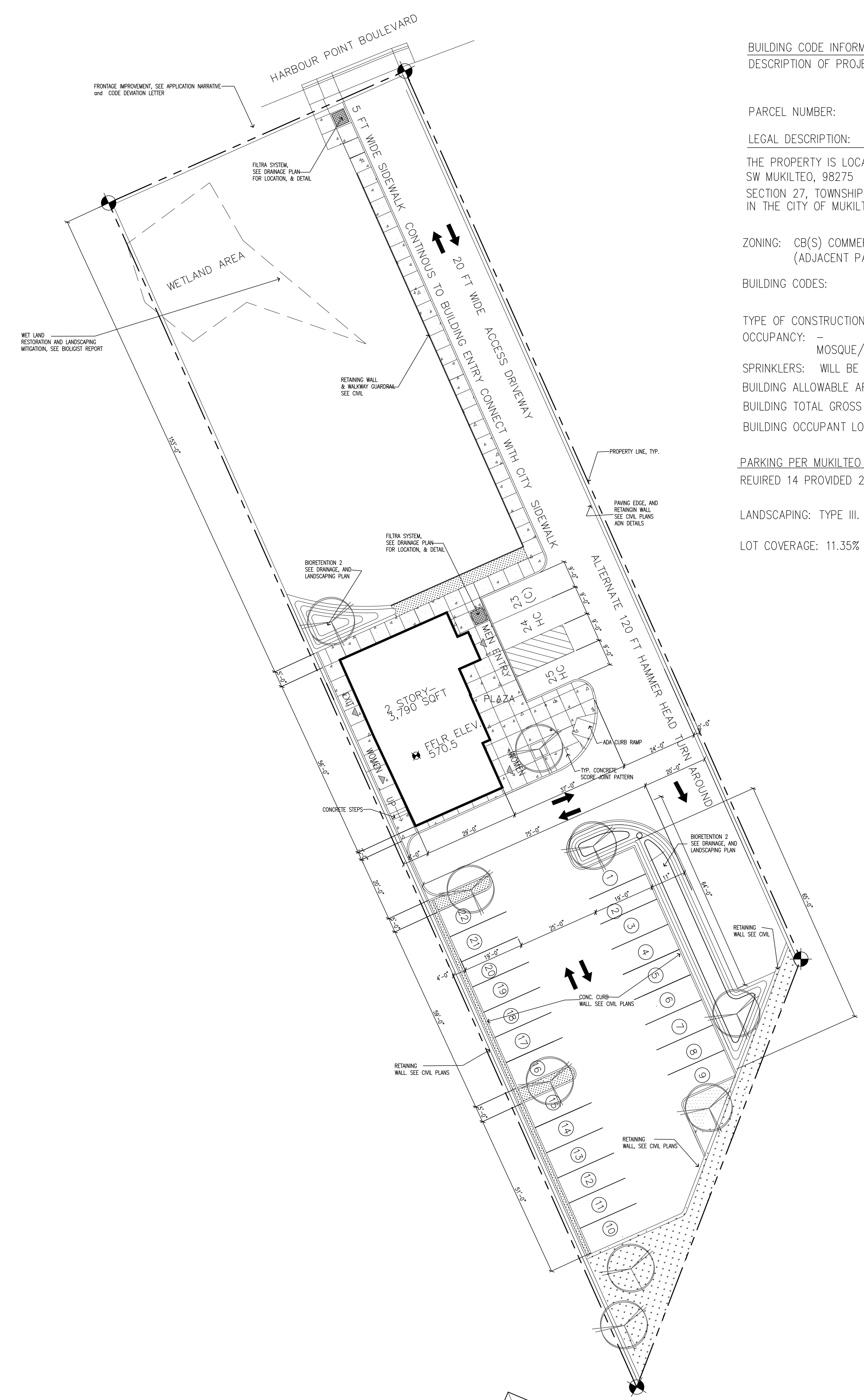
TYPE OF CONSTRUCTION: NEW CONSTRUCTION-TYPE III-B
 OCCUPANCY: - MOSQUE/ PRAYER HALL, CLASSROOM, OFFICES)

SPRINKLERS: WILL BE SPRINKLED
 BUILDING ALLOWABLE AREA: 17000
 BUILDING TOTAL GROSS FLOOR AREA: 3,976 SQFT
 BUILDING OCCUPANT LOAD: 65

PARKING PER MUKILTEO ZONING REQUIREMENT: (SEE PARKING ANALYSIS REPORT)
 REUIRED 14 PROVIDED 25

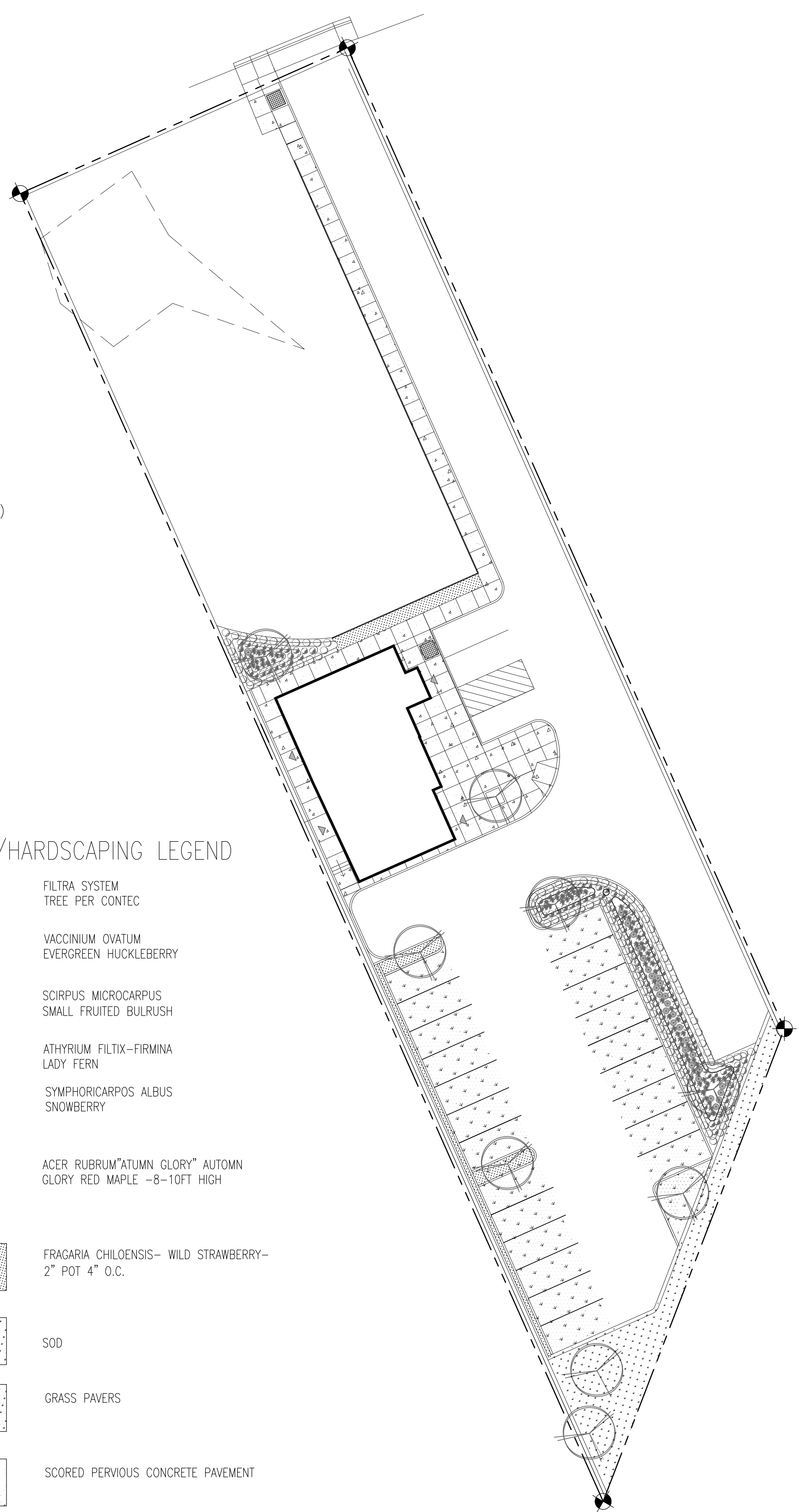
LANDSCAPING: TYPE III. MIN 10% OF PARKING AREA

LOT COVERAGE: 11.35%



LANDSCAPING/HARDSCAPING LEGEND

- FILTRA SYSTEM TREE PER CONTEC
- VACCINIUM OVATUM EVERGREEN HUCKLEBERRY
- SCIRPUS MICROCARPUS SMALL FRUITED BULRUSH
- ATHYRIUM FILTIX-FIRMINA LADY FERN
- SYMPHORICARPOS ALBUS SNOWBERRY
- ACER RUBRUM"ATUMN GLORY" AUTOMN GLORY RED MAPLE -8-10FT HIGH
- FRAGARIA CHILOENSIS- WILD STRAWBERRY- 2" POT 4" O.C.
- SOD
- GRASS PAVERS
- SCORED PERVIOUS CONCRETE PAVEMENT



1 SITE PLAN
 1"=20'-0"

1 LANDSCAPING PLAN
 1"=20'-0"