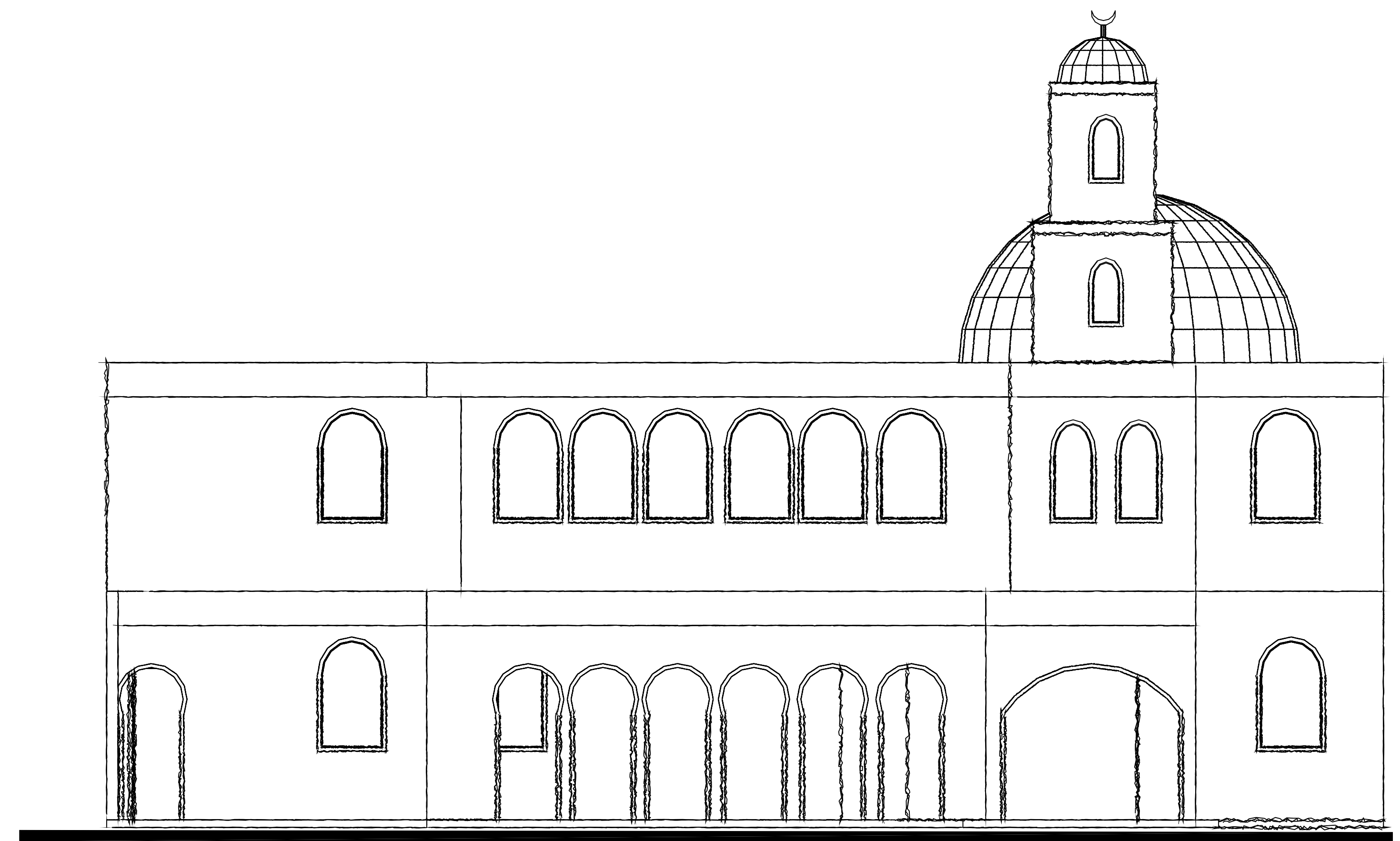
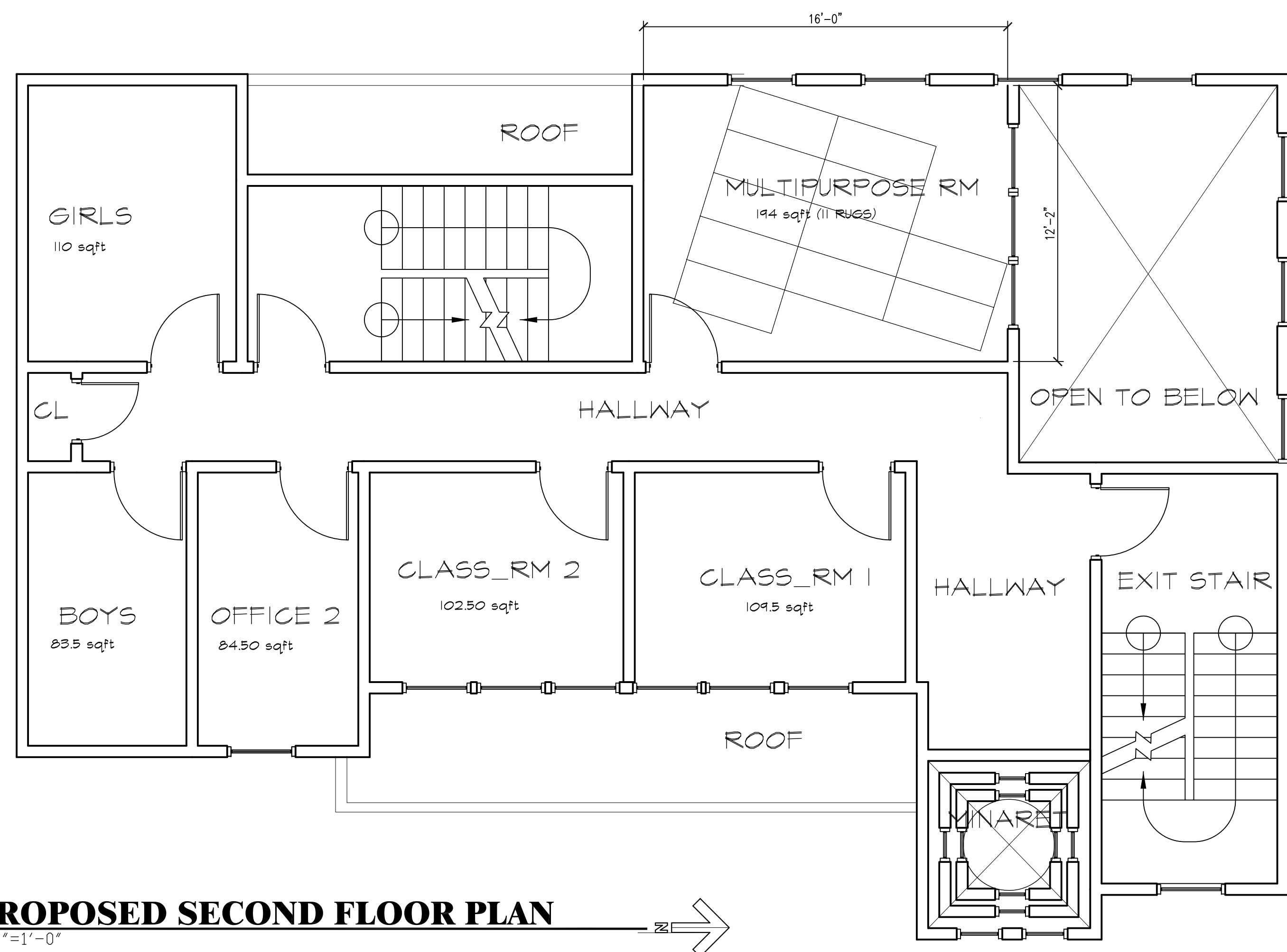


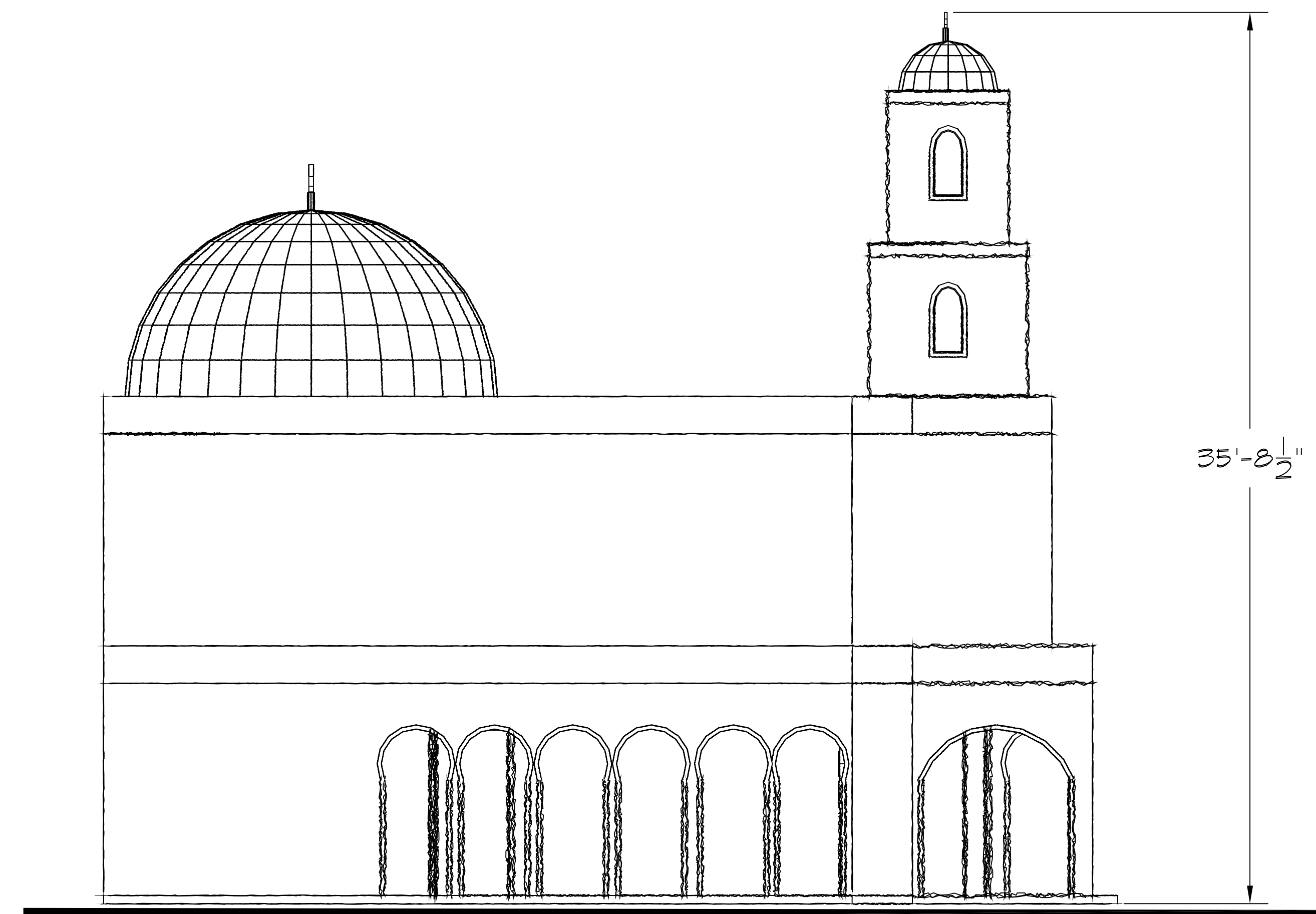
1  
AI 1/4"=1'-0"



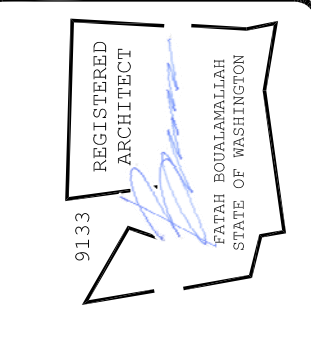
3  
AI 1/4"=1'-0" **PROPOSED SCHEMATIC EAST ELEVATION**



2  
AI 1/4"=1'-0"



4  
AI 1/4"=1'-0" **PROPOSED SCHEMATIC SOUTH ELEVATION**



FATAH BOUALALLAH, ARCHITECT  
5333 150 PL SW EDMONDS WA 98026  
PHONE: 425-268-3883  
EMAIL: FBARCHITECTS@FRONTIER.COM

**PROPOSED FLOOR PLAN & ELEVATIONS**  
**ICOM-ISLAMIC CENTER OF MUKILTEO**  
200 HARBOUR POINT BLVD SW, MUKILTEO, 98275

FLOOR PLAN &  
EXTERIOR ELEVATIONS

NO	REVISION	DATE
1		
3		
2		

NO	ISSUED TO	DATE
1	City of Mukilteo/USA Review	2/5/16
2		
3		

DRAWN BY: fd  
CHECKED BY:  
DATE: 08/08/15

PROJECT NUMBER:  
SHEET NUMBER: AI.0