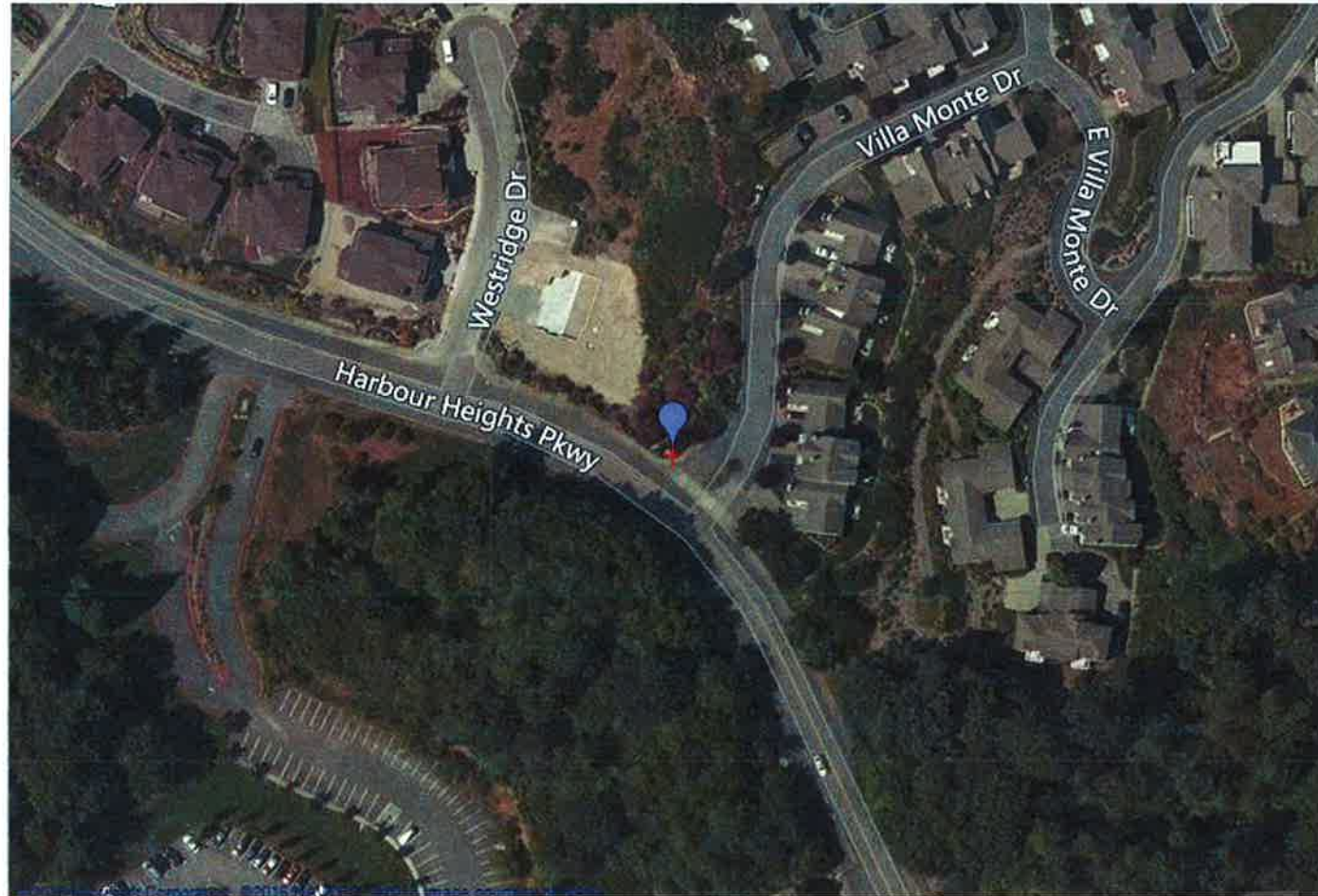


### Location of Speed Study



### Summary of Findings

| Date                | Location  | Average Daily Traffic | Average Speeds | 85% of vehicles traveling at or below this speed |
|---------------------|---|-----------------------|----------------|--|
| January 15-26, 2016 | Harbour Heights Parkway (at Villa Monte Dr. Intersection) Westbound | 1285                  | 28 MPH         | 34 MPH   |
| January 15-26, 2016 | Harbour Heights Parkway (at Villa Monte Dr. Intersection) Eastbound | 1274                  | 26 MPH         | 32 MPH   |

## Customized Traffic Action Plan for Harbour Heights Parkway

### Education, Encouragement, and Enforcement

By educating the community and encouraging safe driving, we can begin to change driver behavior and reduce vehicle speeds.



### Traffic Enforcement

The Public Works Department works closely with the Police Department to enforce speed limits and other traffic laws in neighborhoods. Using key traffic data provided by Public Works staff, officers focus their scheduled patrols on the times and places where speeding most often occurs. Typically, targeted enforcement occurs during a one-week timeframe. Enforcement is also available by request to Mukilteo residents.

### Neighborhood Speed Watch Programs

The Neighborhood Speed Watch is a public awareness program that provides citizens with partnership opportunities in solving speeding problems in their neighborhood. Residents monitor the speed of vehicles with radar equipment on loan from the Police Department. Police staff train residents on how to use the radar unit to record the license plate numbers of those motorists driving at least 5 mph above the posted speed limit. A letter is sent from the Police Department to the registered owners of those vehicles informing them of the observed violation and encourages them or the other drivers of their vehicle to drive at or below the posted speed limit. Since this is a community awareness program, no formal citations or fines are issued.



A short 1 hour training session is provided to the requestor by City staff. The requestor collects motorists' data and submits the results to City Staff. To participate in this program, please call 425.263.8100.

### Radar Trailer/Dolly



The radar trailer/dolly is a portable trailer equipped with a radar unit which detects the speed of passing vehicles and displays the speed on a reader board. The goal is to heighten driver's awareness of both the speed at which they are traveling and the posted speed limit. This encourages drivers to adjust their speeds, if needed.

Police Officers or Police Volunteers will place the radar trailer or dolly at location as requested. The Police Department may use the trailer as a "speed checkpoint" and have an officer present to issue citations to violators. To request a radar speed trailer be placed at a particular location, call 425.263.8100.

### Stationary Radar Sign

Stationary radar signs direct a driver's attention to the posted speed limit and digitally display the speed of the driver's vehicle on a large message board. The instant feedback results in a greater awareness of the speed limit and encourages motorists to adjust their speed accordingly, if needed. Locations are based on prioritized scoring criteria and available funding. Scoring criteria considers vehicle speed, traffic volume, street conditions, proximity to schools and parks, and reported accident history. After locations are determined, residents in the proposed locations for the signs must support the installation before proceeding to final design and construction.



Through a petition process conducted by the requestor, sixty-five percent (65%) of residents must support the project in order for consideration of having the signs to be installed. To begin the process for this sign request, please call 425.263.8082 to find the neighborhood boundaries for the petition.

## My Action Plan for Harbour Heights Parkway

Are you feeling inspired to take action to address the traffic concerns on Harbour Heights Parkway?

Here is a checklist to help you get started:

Talk to my neighbors and share the City's findings and recommendations

List interested neighbors who want to help me with efforts:

---

---

---

Decide the educational programs we want to participate in:

Neighborhood Speed Watch Programs

Radar Trailer/Dolly—I am willing for it to be placed in my drive way.

Traffic Enforcement—The City has already taken steps to add additional traffic enforcement.

Contact City staff at 425.263.8100 to set-up a training session for the Neighborhood Speed Watch Program, and get materials

Contact City staff at 425.263.8082 for the neighborhood boundaries to start the petition process for a radar sign.

Notes:

---

---

---

---

---

---

---



## Traffic Action Plan

### City of Mukilteo Traffic Calming Program

May 11, 2016

Mike Lee

Mukilteo, WA 98275

Re: Intersection at Vista Drive and Harbour Heights Parkway

Dear Mike,

Thank you for contacting the City of Mukilteo and sharing your concerns with vehicle speeds on Harbour Heights Parkway, near the intersection of Vista Drive. We have completed a field review and data analysis on Harbour Heights Parkway and compiled this information into this Traffic Action Plan (TAP), as well as our recommendations.

A speed study was conducted near the intersection of Vista Drive, on Harbour Heights Parkway. The location was selected to capture the highest speeds possible. The speed study began on January 15, 2016 and ended on January 26, 2016. The study shows 85% of motorists are traveling at or below 34 mph in the westbound direction (downhill) and at or below 32 mph in the eastbound direction (uphill). There were 14,153 vehicles recorded traveling westbound, and 14,030 traveling eastbound during the 11 day speed study.

The speed study was provided to the Mukilteo Police Department, who will be conducting additional traffic enforcement in this area as part of their traffic enforcement emphasis areas.

Based on the traffic study, the Public Works Department will be installing a TEMPORARY radar sign within the next year. After it has been installed approximately 90 days the City will conduct another traffic study to determine if the radar sign is affecting motorists speeds and remove the TEMPORARY radar sign.

To address those motorists choosing to drive faster than the posted speed limit, we encourage you and your neighbors to participate in one of our education programs as described on page 3 of this report.

Again, thank you for sharing your concerns with us. We look forward to working with you and your neighbors on the programs suggested to address your traffic concerns. Please feel free to contact Challis Stringer at [cstringer@mukilteowa.gov](mailto:cstringer@mukilteowa.gov) or 425.263.8082 regarding any of the information in this TAP.

Sincerely,

A handwritten signature in blue ink, appearing to read "Rob McGaughey".

Robert McGaughey, P.E.

Director of Public Works/City Engineer