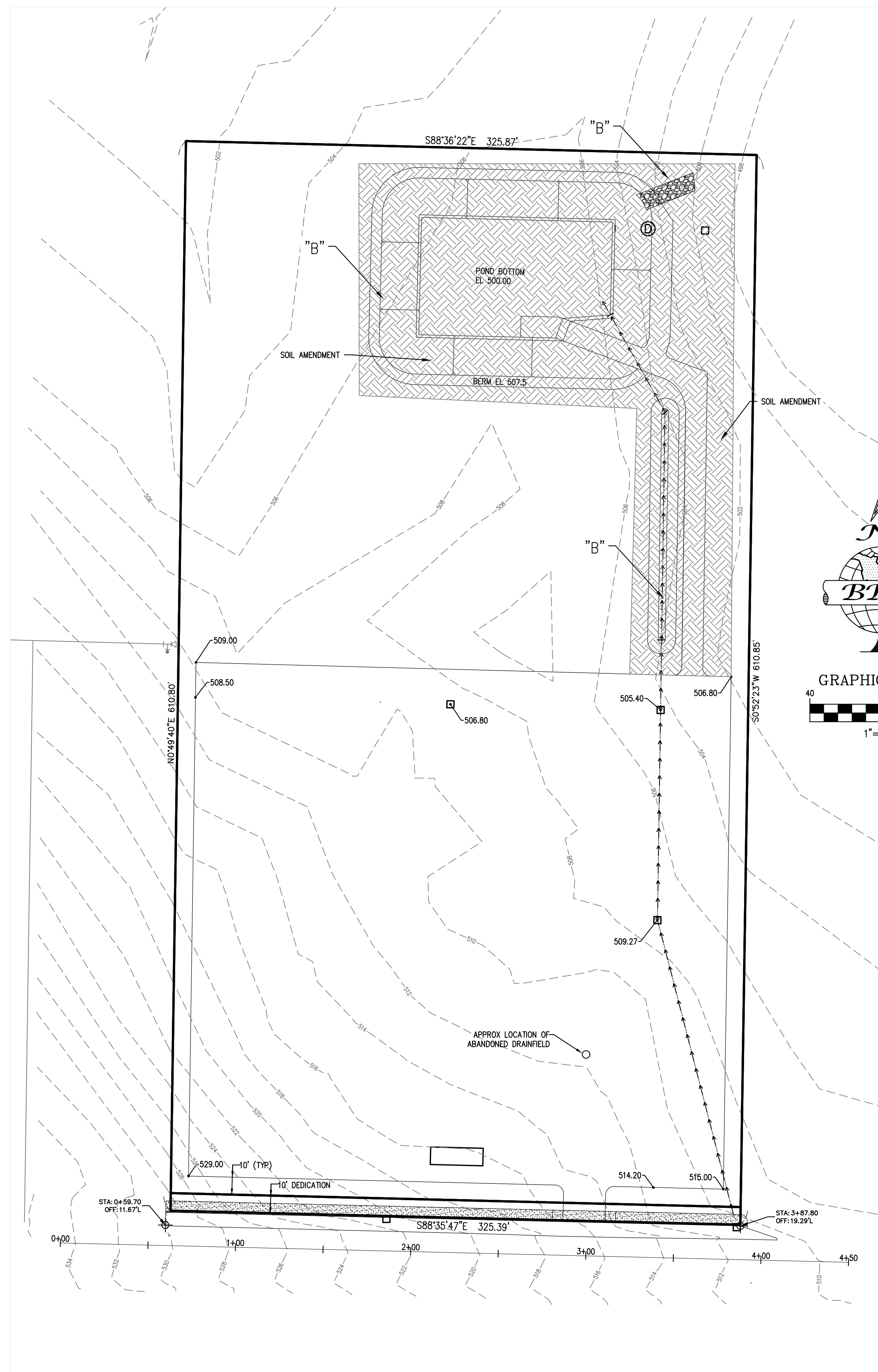
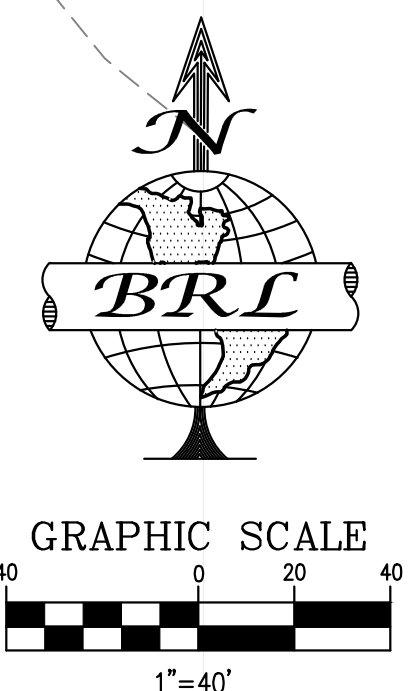


FILE/DRAWING: X-REFS: PLOT NAME: FIELD BOOK NO.: DATE OF FIELD SURVEY:



Received by Email

2022-03-03



**BMP T5.13**  
**SOIL AMENDMENT SPECIFICATIONS:**  
 THE SOIL QUALITY DESIGN GUIDELINES CAN BE MET BY USING ONE OF THE METHODS AS FOLLOWS.  
 1. LEAVE UNDISTURBED NATIVE VEGETATION AND SOIL, AND PROTECT FROM COMPACTION DURING CONSTRUCTION.  
 2. AMEND DISTURBED SOIL ACCORDING TO THE FOLLOWING PROCEDURES:  
 a. SCARIFY SUBSOIL TO A DEPTH OF ONE FOOT.  
 b. IN PLANTING BEDS, PLACE THREE INCHES OF COMPOST AND TILL IN TO AN EIGHT-INCH DEPTH.  
 c. IN TURF AREAS, PLACE TWO INCHES OF COMPOST AND TILL IN TO AN EIGHT-INCH DEPTH. APPLY TWO TO FOUR INCHES OF ARBORIST WOOD CHIP, COURSE BARK MULCH, OR COMPOST MULCH TO PLANTING BEDS AFTER PLANTING.  
 ALTERNATIVELY, DISTURBED SOIL CAN BE AMENDED ON A SITE-CUSTOMIZED MANNER SO THAT IT MEETS THE SOIL QUALITY CRITERIA AS APPROVED BY SNOHOMISH COUNTY.  
 3. STOCKPILE EXISTING TOPSOIL DURING GRADING, REPLACE IT PRIOR TO PLANTING. STOCKPILED TOPSOIL MUST BE AMENDED IF NEEDED TO MEET THE ORGANIC MATTER AND DEPTH REQUIREMENTS BY FOLLOWING THE PROCEDURES IN METHOD (2) ABOVE.  
 4. IMPORT TOPSOIL MIX OF SUFFICIENT ORGANIC CONTENT AND DEPTH TO MEET THE ORGANIC MATTER AND DEPTH REQUIREMENTS.  
 MAINTENANCE:  
 A. SOIL QUALITY AND DEPTH SHOULD BE ESTABLISHED TOWARD THE END OF CONSTRUCTION AND ONCE ESTABLISHED, SHOULD BE PROTECTED FROM COMPACTION, SUCH AS FROM LARGE MACHINERY USE, AND FROM EROSION.  
 B. SOILS SHOULD BE PLANTED AND MULCHED AFTER INSTALLATION.  
 C. PLANT DEBRIS OR ITS EQUIVALENT SHOULD BE LEFT ON THE SOIL SURFACE TO REPLENISH ORGANIC MATTER.  
**"B" = SOIL MANAGEMENT PLAN AREA**

DESIGNED BY:	LDR
CHECKED BY:	BRL
DATE:	19-056

**BRL Services LLC**  
 AN ENGINEERING COMPANY  
 2221 EVERETT AVE., SUITE 203, EVERETT, WA 98201  
 E-MAIL: [aristides@bri-link.net](mailto:aristides@bri-link.net)



**SOIL AMENDMENT PLAN**  
**RODRIGUEZ COMMERCIAL SITE**  
 4203 78TH ST SW  
 MUKILTEO, WA 98275

SHEET:	1
REV:	1