

Legal Description:

REFER TO QUIT CLAIM DEED (A.F. #201202130393).

Notes:

- BOUNDARY LINES SHOWN AND CORNERS SET REPRESENT DEED LOCATIONS; OWNERSHIP LINES MAY VARY. NO GUARANTEE OF OWNERSHIP IS EXPRESSED OR IMPLIED. THIS SURVEY PERFORMED WITHOUT THE BENEFIT OF A TITLE REPORT AND DOES NOT PURPORT TO SHOW ALL EASEMENTS, RESTRICTIONS, RESERVATIONS AND OCCUPATION WHICH MAY ENCUMBER TITLE TO OR USE OF THIS PROPERTY.
- UNDERGROUND UTILITY LOCATIONS WERE DETERMINED FROM EXISTING SURFACE FEATURES AND AVAILABLE RECORDS. WEST ALLIANCE, LLC CANNOT GUARANTEE THE ACCURACY OF THESE RECORDS. CALL BEFORE YOU DIG! FOR UTILITY LOCATIONS IN SNOHOMISH COUNTY, CALL 1-800-424-5555.

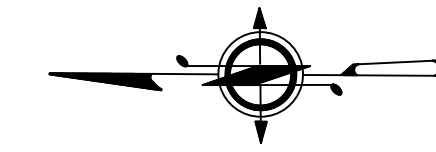
Equipment & Procedure:

LEICA TS 12, 3 SECOND TOTAL STATION FOR FIELD TRAVERSE.
MONUMENTS VISITED 7/2021
PRECISION EXCEEDS STATE STANDARDS.
PER: W.A.C. 332-130-090.



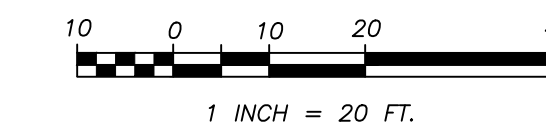
Received by Email

06/17/2022



Basis of Bearing:

RECORD OF SURVEY (A.F. #8511205001)
(MONUMENTED C.L. 3RD ST. BETWEEN LINCOLN AVE. & PARK AVE.)



Site Benchmark
WSDOT BRASS DISC.
ELEVATION=49.30
(DATUM: NAVD83)

**(Secondary State Hwy. No. 1-I)
S.R. 525**

Lincoln Ave.

CENTERLINE OF SR 525 PER:
SR525 MUKILTEO VICINITY
OVERCROSSING SHT. 1 OF 4
APPROVED NOV. 21, 1939.

SPIRAL CURVE
L=200'
T=300.00"
P=0.87
K=99.99
A=618.04

FOUND
2-1/2" CONC.
FILLED PIPE
W/COP. PIN
(CASED) 7/21

Delta=06°22'07"
R=1910.00
L=212.31'

Legend:

NOT ALL SYMBOLS USED

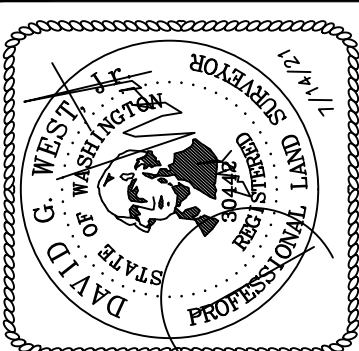
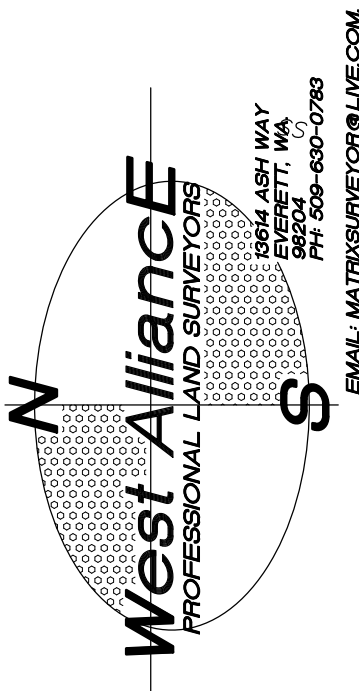
- EXISTING MONUMENT
- WATER METER
- EX. FIRE HYDRANT
- WATER VALVE
- UTILITY POLE
- UTILITY ANCHOR
- LIGHT POLE
- GAS VALVE
- STREET SIGN
- EX. CB, TYPE 1
- CATCH BASIN TYPE 2
- SAN SWR. MANHOLE
- SS - SAN SWR. PIPELINE
- SD - STORM DRAIN
- W - WATER PIPELINE
- OWP - OVERHEAD POWER
- G - GAS LINE
- UG - UNDERGROUND POWER
- ROCKERY
- BSBL - BUILDING SETBACK LINE

Tree Legend:

- A ~ ALDER
- AP ~ APPLE
- B ~ BIRCH
- C ~ CEDAR
- CW ~ COTTONWOOD
- DEC ~ DECIDUOUS
- F ~ FIR
- FRT ~ FRUIT
- J ~ JUNIPER
- M ~ MAPLE
- S ~ SPRUCE

REVISIONS:

DATE: 7/20/2021



Boundary & Topographic Survey

For

Sharon & Donne Pittman

SHEET:

1 OF 1