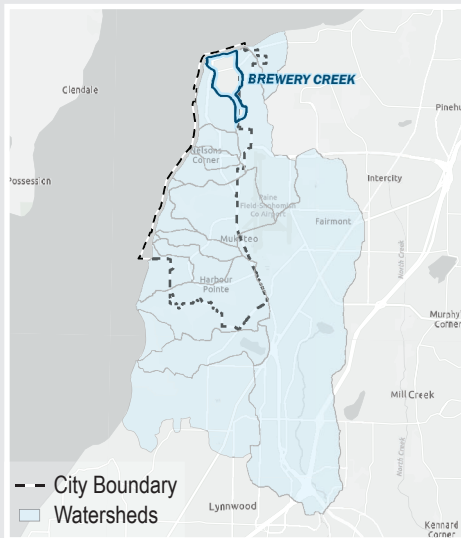


# BREWERY CREEK

Receiving Water **Puget Sound**  
 WRIA **7**  
 Acres **302.96**

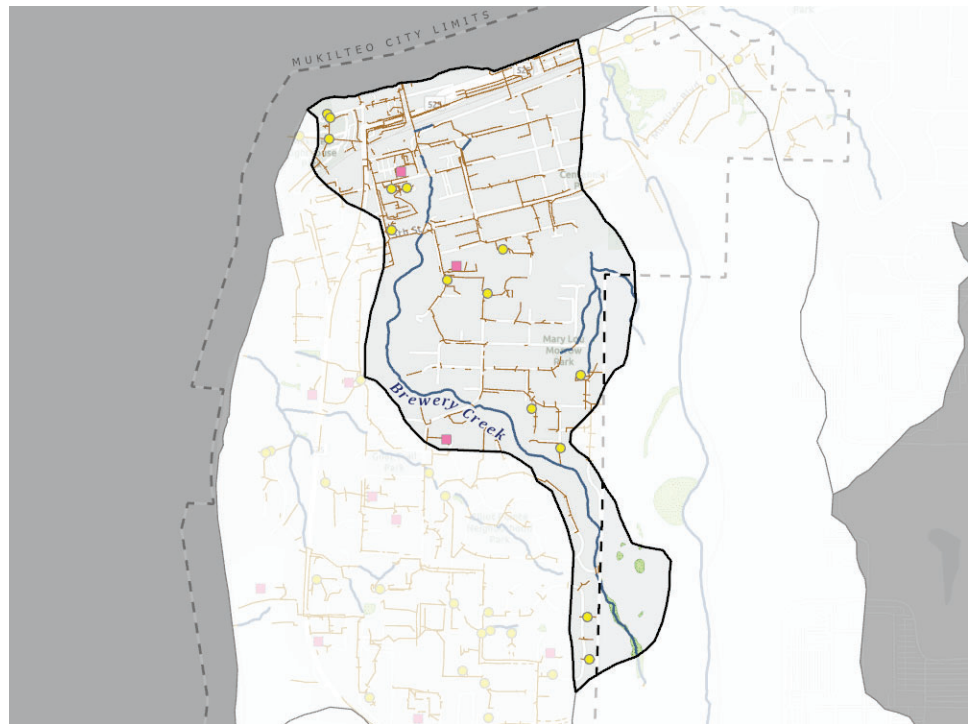


## Location



Acres in City Jurisdiction **272.14**  
 Percent in City Jurisdiction **90%**

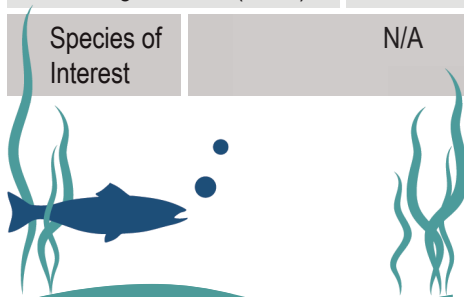
## Streams and Pipes



## Habitat Information

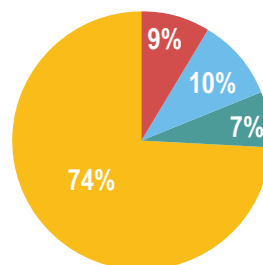


Habitat - Wetland (Acres)	3.38
Habitat - Length Fish Bearing Streams (Miles)	0.74
Species of Interest	N/A

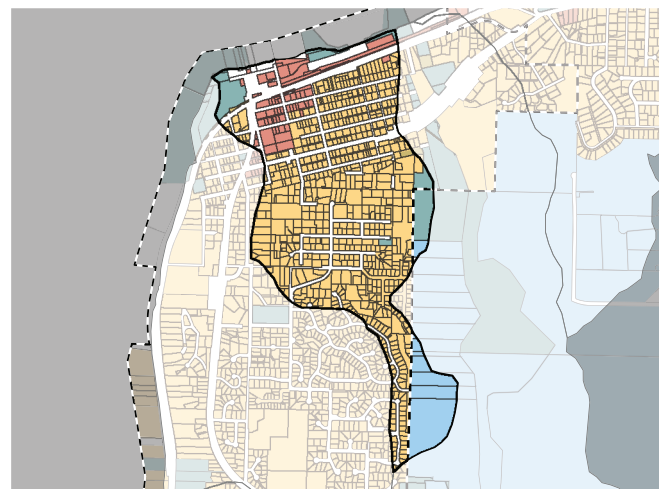


— Stormwater Pipe/Ditch Length **10.41 miles**    ● Stormwater Facility (Public)  
 — Stream Length **1.96 miles**    ■ Stormwater Facility (Private)  
 ■ Wetlands    Stormwater Facility (P&P) Total Count **18**

## Zoning



Zone	Acres
Commercial	21.49
Industrial	25.08
Open Space	16.92
Residential	180.12



## Unique Characteristics

Named for Mukilteo's beer brewing industry that started around 1864 with a brewery built in the ravine that is now Brewery Creek.

Home to numerous City parks and beaches.

Oldest City stormwater infrastructure.

For more information scan the QR code or visit <https://stormwater-comp-plan-2024-1-mukilteo-city.hub.arcgis.com/>

