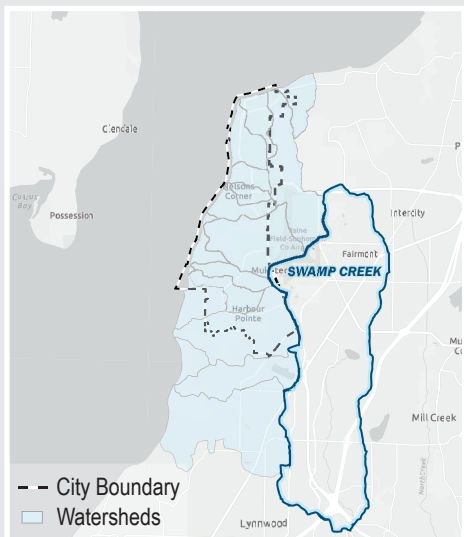


SWAMP CREEK

Receiving Water **Sammamish**
 WRIA **8**
 Acres **6603.27**

**IT'S ALL
 CONNECTED**
 & flows to the Sound

Location

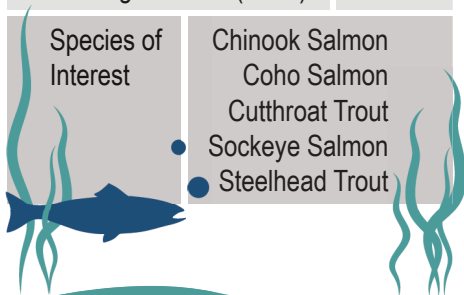


Acres in City Jurisdiction **30.90**
 Percent in City Jurisdiction **<0.01%**

Habitat Information



Habitat - Wetland (Acres)	327.03
Habitat - Length Fish Bearing Streams (Miles)	13.32

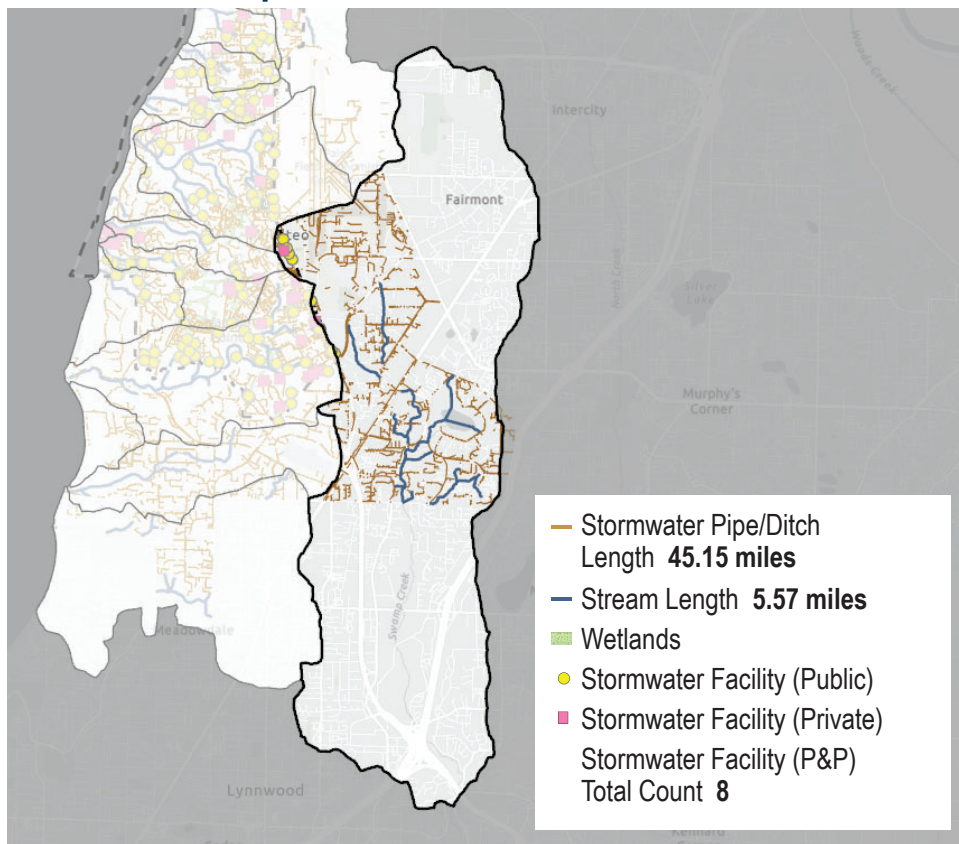


Unique Characteristics

Drains all the way to Lake Washington.

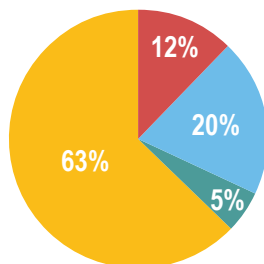
Flows through several other close by municipalities including Bothell, Lynnwood, Brier, Mountlake Terrace, Everett, and Kenmore where it outfalls to the Sammamish River.

Streams and Pipes

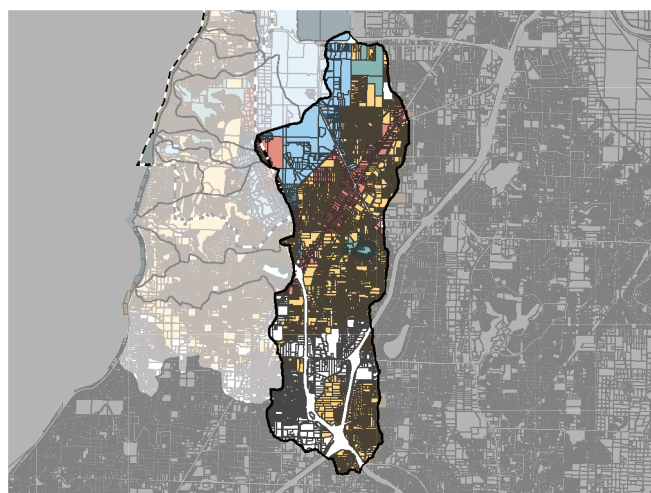


Stormwater Pipe/Ditch Length **45.15 miles**
 Stream Length **5.57 miles**
 Wetlands
 Stormwater Facility (Public)
 Stormwater Facility (Private)
 Stormwater Facility (P&P)
 Total Count **8**

Zoning



Zone	Acres
Commercial	554.17
Industrial	899.45
Open Space	235.13
Residential	2842.88



For more information scan the QR code or visit <https://stormwater-comp-plan-2024-1-mukilteo-city.hub.arcgis.com/>

