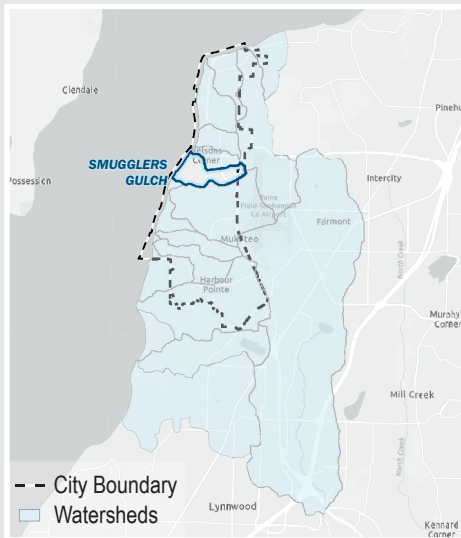


SMUGGLERS GULCH

Receiving Water **Puget Sound**
 WRIA **8**
 Acres **301.74**

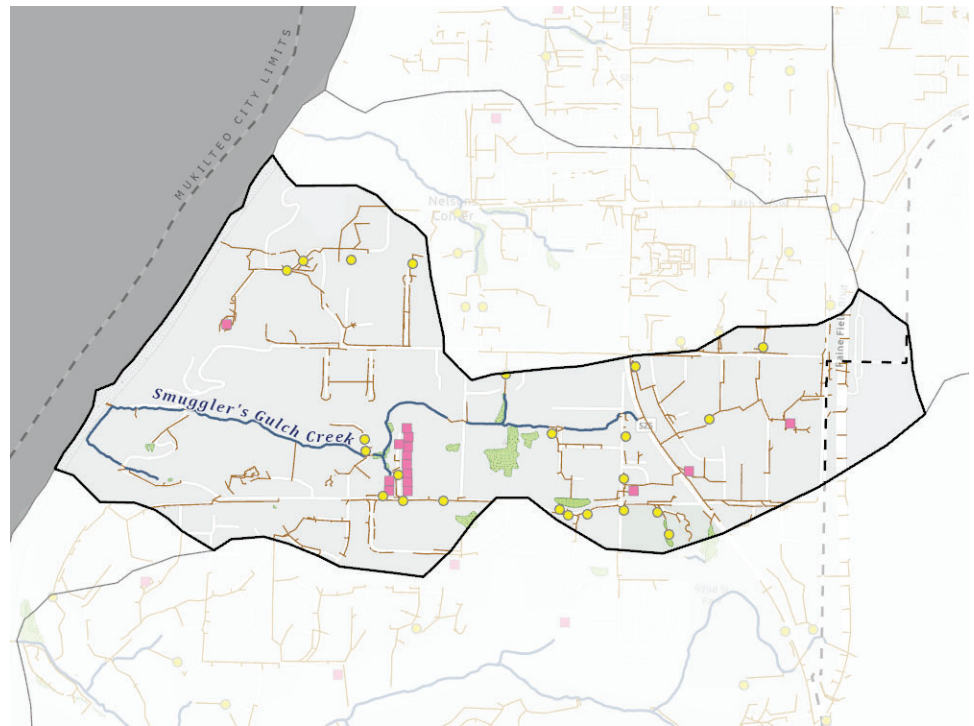


Location



Acres in City Jurisdiction **287.78**
 Percent in City Jurisdiction **95%**

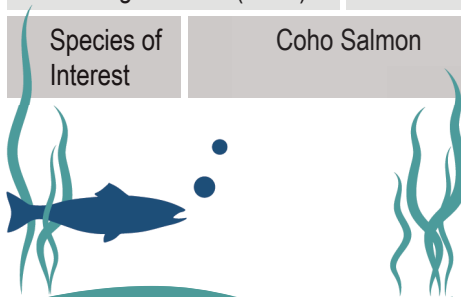
Streams and Pipes



Habitat Information

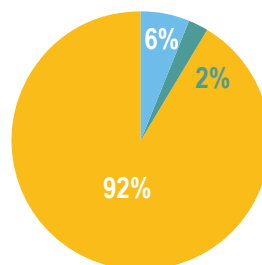


Habitat - Wetland (Acres)	3.16
Habitat - Length Fish Bearing Streams (Miles)	0.09
Species of Interest	Coho Salmon

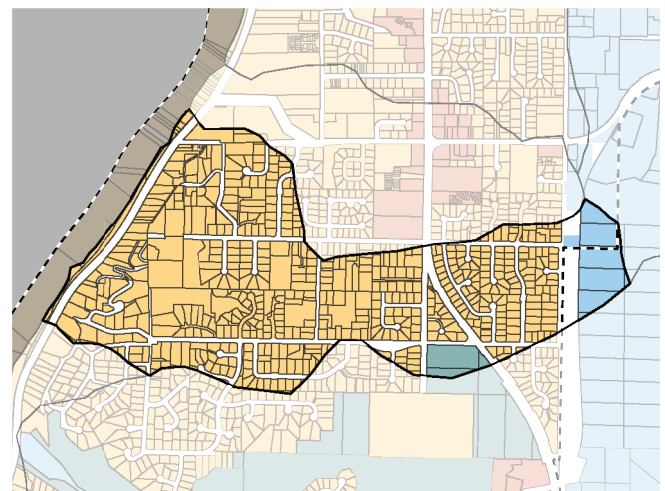


Stormwater Pipe/Ditch Length **7.67 miles**
 Stream Length **1.14 miles**
 Wetlands
 Stormwater Facility (Public)
 Stormwater Facility (Private)
 Stormwater Facility (P&P) Total Count **40**

Zoning



Zone	Acres
Commercial	0.00
Industrial	15.40
Open Space	5.96
Residential	224.78



Unique Characteristics

Namesake stems from the heavily wooded hillside and deep gulch that smugglers hid in during prohibition.

For more information scan the QR code or visit <https://stormwater-comp-plan-2024-1-mukilteo-city.hub.arcgis.com/>

