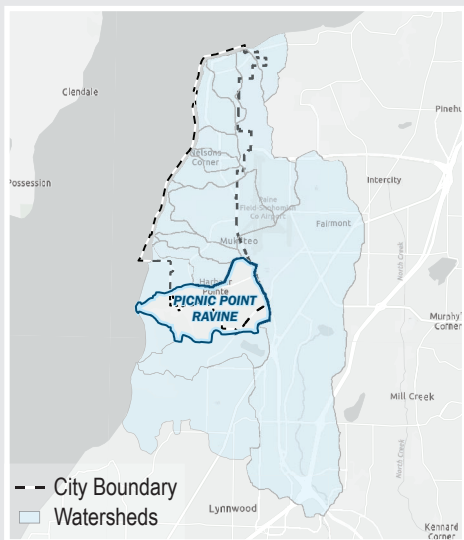


# PICNIC POINT RAVINE

Receiving Water **Puget Sound**  
 WRIA **8**  
 Acres **1416.20**

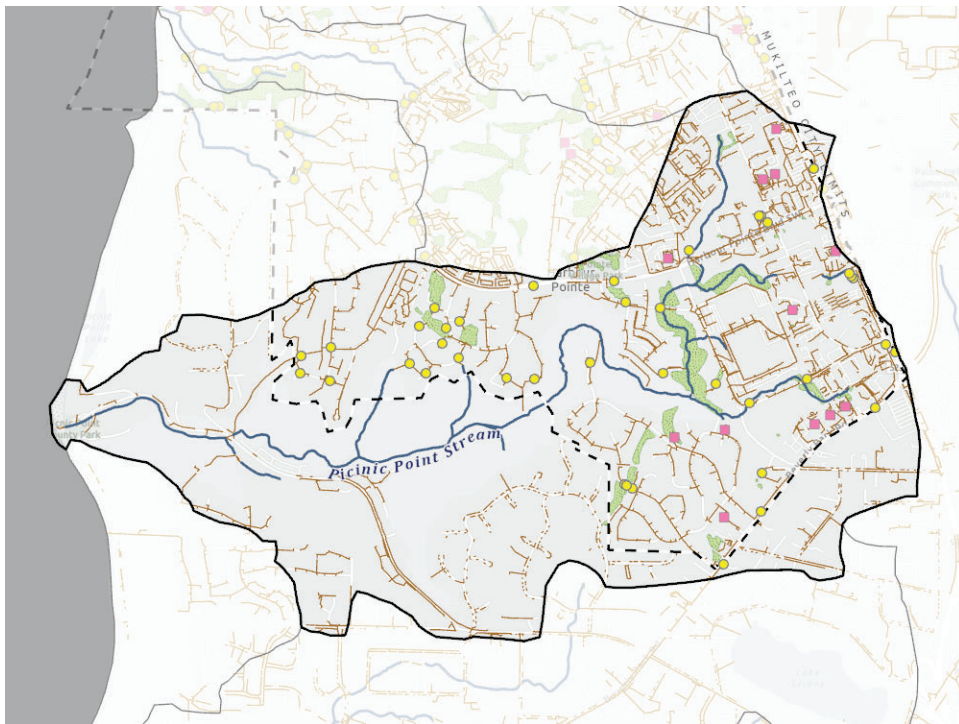
**IT'S ALL  
CONNECTED**  
 & flows to the Sound

## Location



Acres in City Jurisdiction **750.09**  
 Percent in City Jurisdiction **53%**

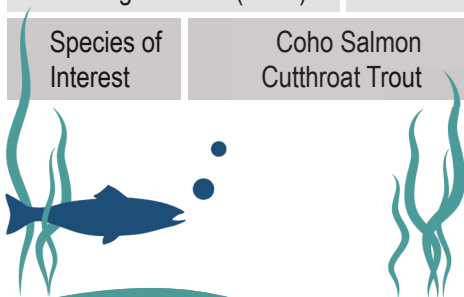
## Streams and Pipes



## Habitat Information



|   |                                |
|---|--------------------------------|
| Habitat - Wetland (Acres)                     | 20.22                          |
| Habitat - Length Fish Bearing Streams (Miles) | 3.28                           |
| Species of Interest                           | Coho Salmon<br>Cutthroat Trout |



## Unique Characteristics

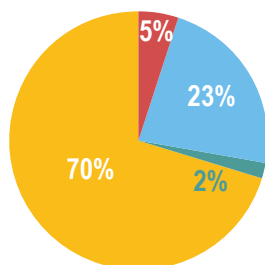
The stream flows through a steep ravine where eroding slopes can contribute large amounts of sediment to the stream.

Home of Picnic Point County Park:

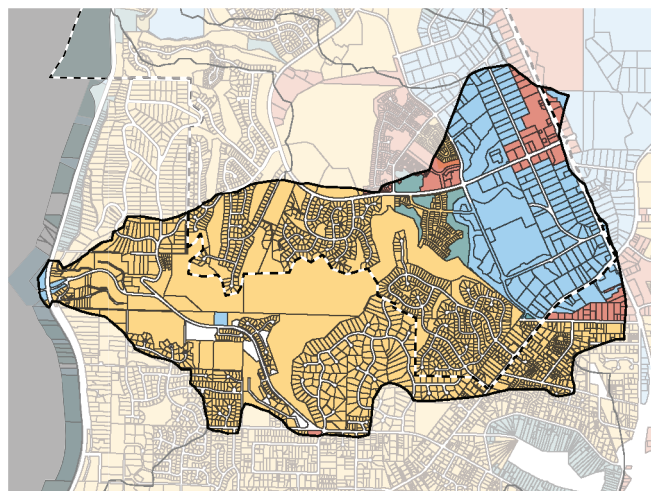
<https://snhomishcountywa.gov/Facilities/Facility/Details/Picnic-Point-Park-72>

Stormwater Pipe/Ditch Length **40.16 miles**  
 Stream Length **45.12 miles**  
 Wetlands  
 Stormwater Facility (Public)  
 Stormwater Facility (Private)  
 Stormwater Facility (P&P) Total Count **53**

## Zoning



| Zone        | Acres  |
|-------------|--------|
| Commercial  | 63.85  |
| Industrial  | 284.82 |
| Open Space  | 22.44  |
| Residential | 876.86 |



For more information scan the QR code or visit <https://stormwater-comp-plan-2024-1-mukilteo-city.hub.arcgis.com/>

