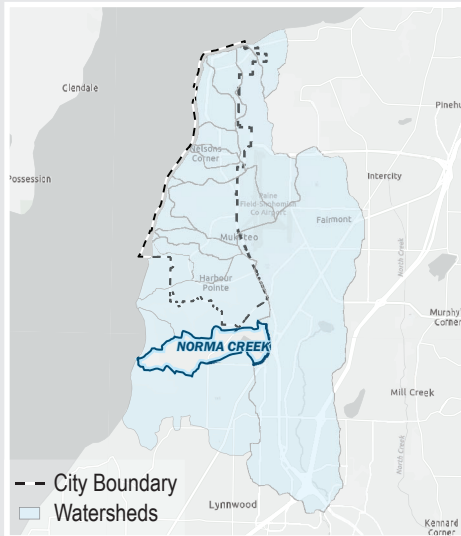


# NORMA CREEK

Receiving Water **Puget Sound**  
 WRIA **8**  
 Acres **833.43**

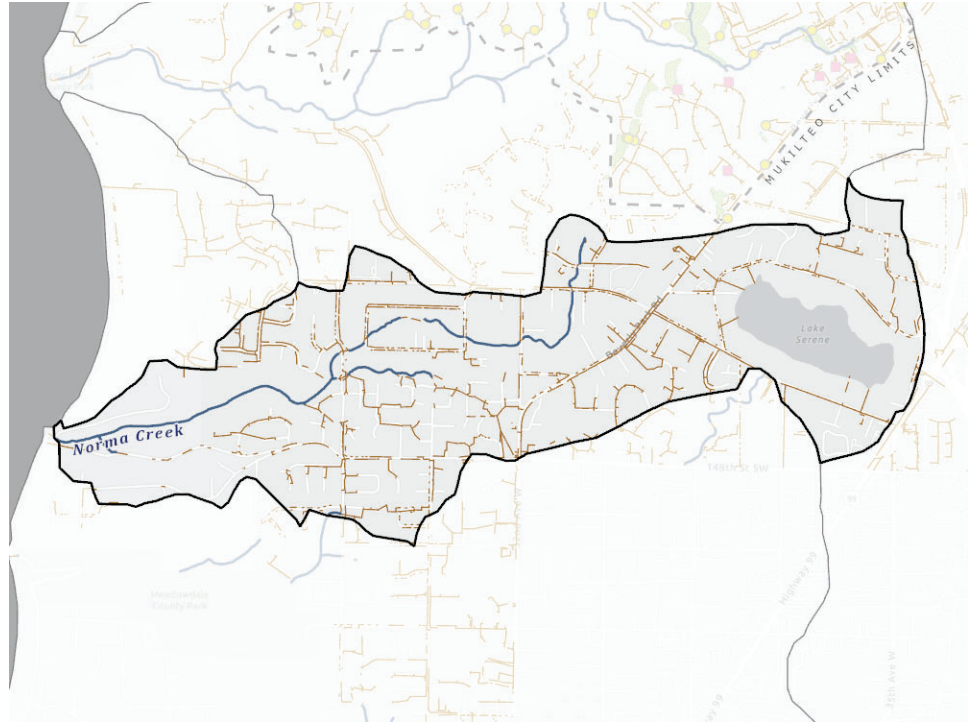


## Location



Acres in City Jurisdiction **0.00**  
 Percent in City Jurisdiction **0%**

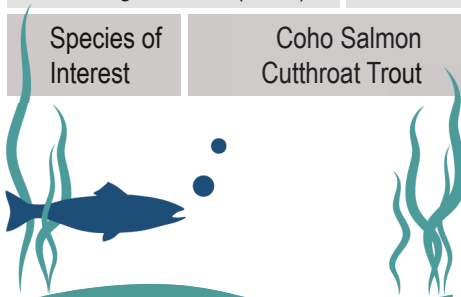
## Streams and Pipes



## Habitat Information

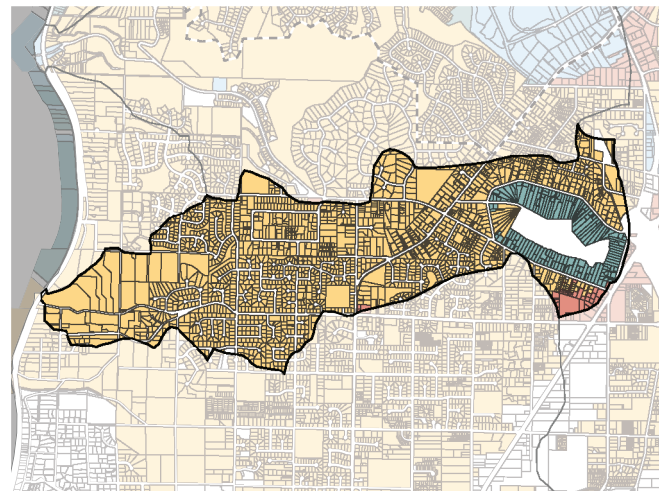
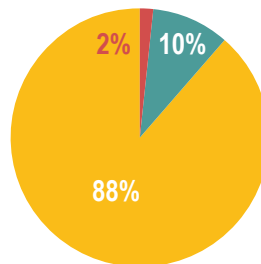


|   |                                |
|---|--------------------------------|
| Habitat - Wetland (Acres)                     | 52.63                          |
| Habitat - Length Fish Bearing Streams (Miles) | 1.90                           |
| Species of Interest                           | Coho Salmon<br>Cutthroat Trout |



Stormwater Pipe/Ditch Length **15.99 miles**    Stormwater Facility (Public)  
 Stream Length **2.20 miles**    Stormwater Facility (Private)  
 Wetlands    Stormwater Facility (P&P) Total Count **0**

## Zoning



## Unique Characteristics

Creek originates at Lake Serene.  
 Coastal cutthroat trout and coho salmon use the lower reaches of this creek  
 Originally named after Norma Ganzina who owned the Norma Beach Boat House.

For more information scan the QR code or visit <https://stormwater-comp-plan-2024-1-mukilteo-city.hub.arcgis.com/>

