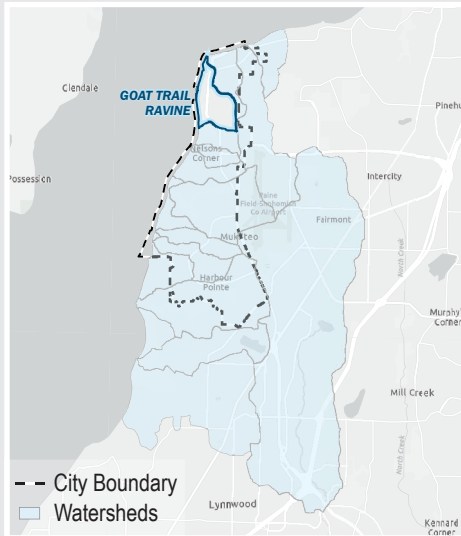


# GOAT TRAIL RAVINE

Receiving Water **Puget Sound**  
 WRIA **8**  
 Acres **382.10**

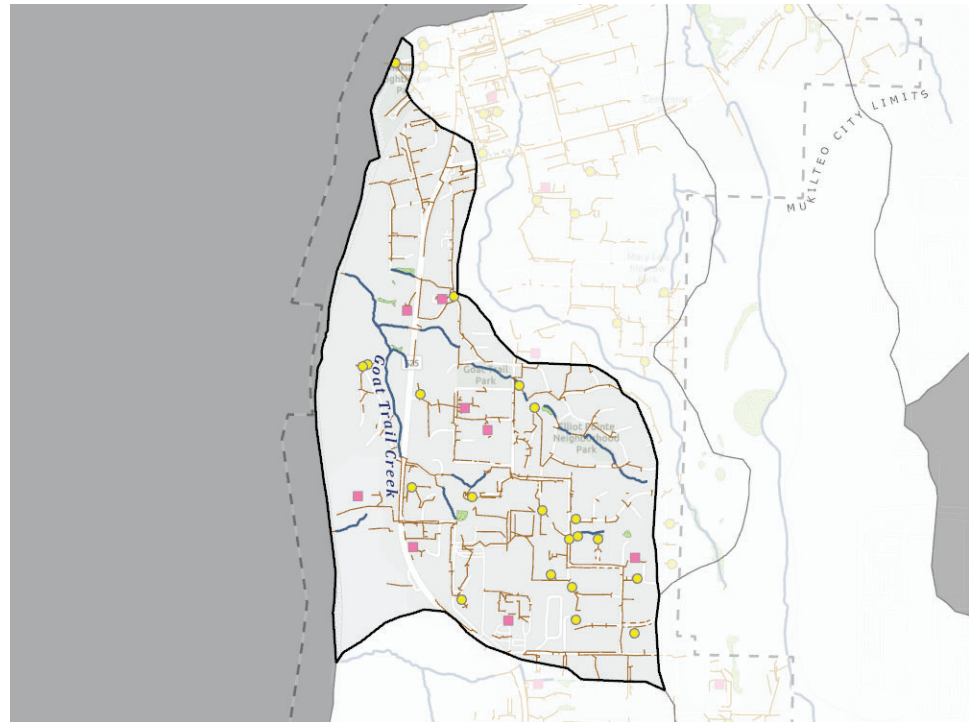


## Location



Acres in City Jurisdiction **382.10**  
 Percent in City Jurisdiction **100%**

## Streams and Pipes



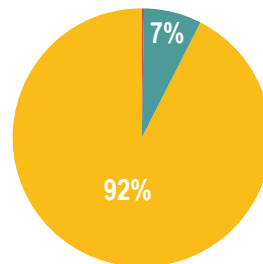
## Habitat Information



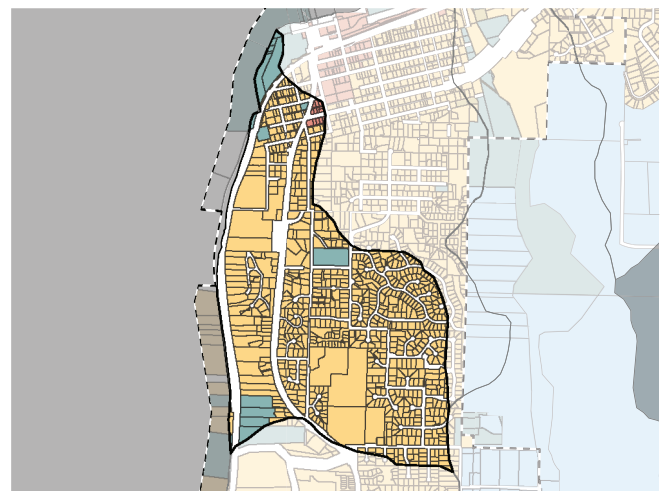
Habitat - Wetland (Acres)	1.52
Habitat - Length Fish Bearing Streams (Miles)	0.0
Species of Interest	N/A

Stormwater Pipe/Ditch Length **11.78 miles**  
 Stream Length **1.40 miles**  
 Wetlands  
 Stormwater Facility (Public)  
 Stormwater Facility (Private)  
 Stormwater Facility (P&P) Total Count **28**

## Zoning



Zone	Acres
Commercial	1.63
Industrial	0.00
Open Space	20.99
Residential	272.89



## Unique Characteristics

Home to two City Parks: Goat Trail Park and Elliot Pointe Park.

For more information scan the QR code or visit <https://stormwater-comp-plan-2024-1-mukilteo-city.hub.arcgis.com/>

