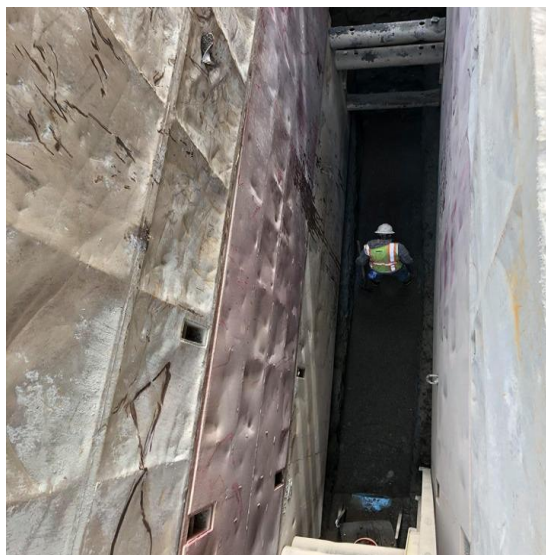




SHELBY ROAD AND PICNIC POINT ROAD MAIN REPLACEMENTS

(AWWD PROJECTS #S1210B AND #W1605)

JULY 2018 PROJECT UPDATE



OVERVIEW

AWWD is replacing water and sewer mains along Picnic Point Road and Shelby Road between 52nd Avenue West and Highway 99 in Lynnwood. The project also includes the installation of new water service lines and sewer laterals from the new mains to existing private service lines.

Improve water and sewer services to the
Picnic Point / Shelby Road
neighborhood

Improve AWWD system reliability and
resilience by replacing dated system
components

CONTACT INFORMATION

AWWD Website: www.awwd.com



AWWD Construction Manager: Bob Hastings
*When contacting by email, please reference
"Shelby Road" in your subject line*

BHastings@awwd.com



Direct/Cell: 425.478.6271



On-Site Project Representative:
Anderson Arifin (Murraysmith)
206.354.6602



SCHEDULE

- ◆ Construction Start: September 2017
- ◆ Construction Completion: September 2018
- ◆ Normal Work Hours: 7am-5pm
- ◆ *Contractor may work at night or on weekends,
dependent upon other construction activities or
as needed due to inclement weather*

***Schedule updates will be provided when new
information becomes available***

PROJECT STATUS

Construction Schedule

Project is on schedule



Budget

Project is within budget



SCOPE OF WORK

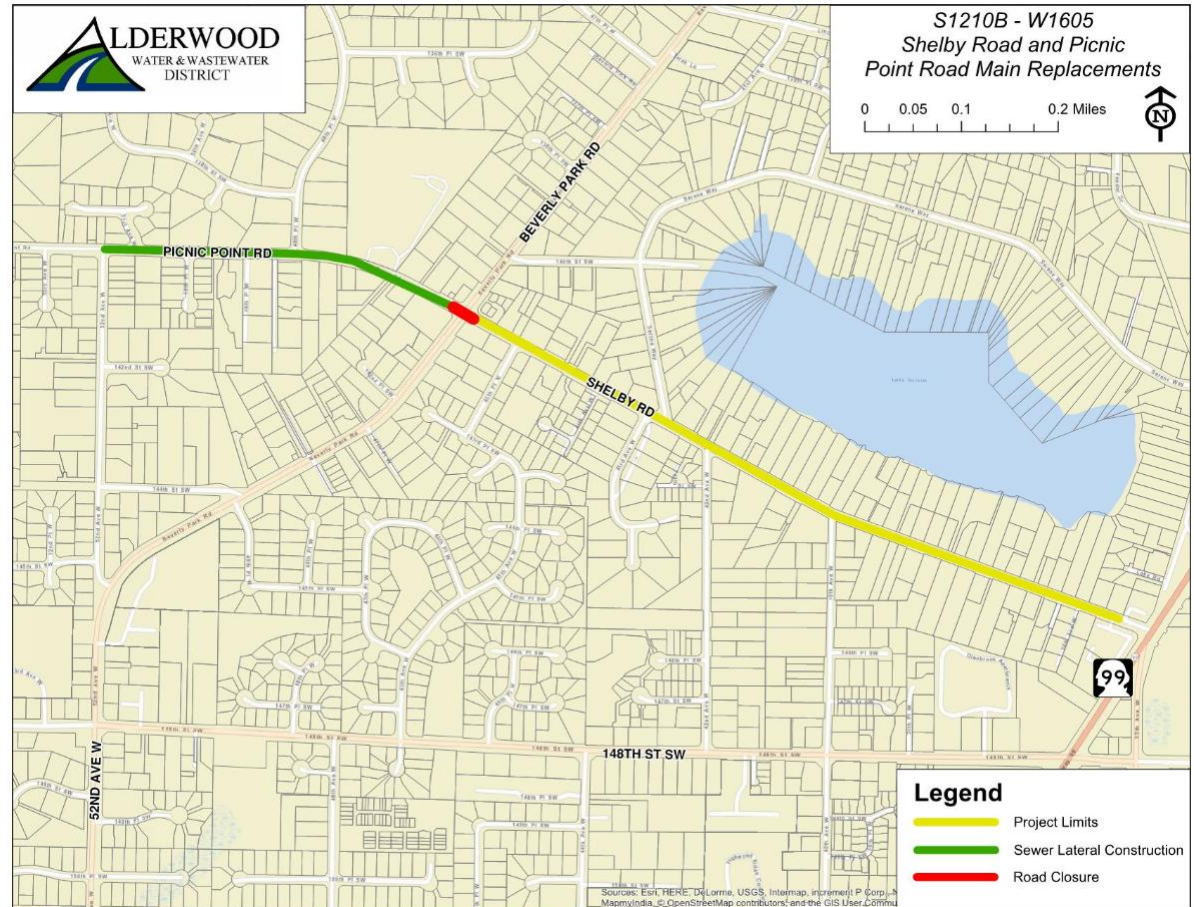
- ◆ Replace and upsize 6,100 feet of sewer main and replace 60 sewer laterals
- ◆ Replace and upsize 6,600 feet of water main and upgrade 160 water services

IMPACTS

- ◆ Local traffic impacts may include temporary lane and full road closures
- ◆ Access will be maintained for residents, emergency traffic, and mail and garbage services at all times
- ◆ Residents can expect temporary water service disruptions, up to 4 hours for area-wide disruptions for water main connections and up to 1 hour for individual water service connections on Picnic Point Road and Shelby Road
- ◆ **Residents along Picnic Point Road and Shelby Road can expect temporary sewer service disruptions of up to 6 hours for sewer lateral connections**
- ◆ Noise generated during construction should be expected

Advance notice will be provided regarding any traffic, sewer, or water service interruptions, unless an emergency arises

PROJECT LOCATION & JULY 2018 ANTICIPATED ACTIVITY



Sewer main line installation along Picnic Point Road from 52nd Ave W to Beverly Park Road is complete. In July and August, crews will install sewer laterals connecting the new main to private individual side sewers.

Potential disruption to sewer service may occur when connecting the new laterals to the private side sewers. The contractor will coordinate with affected residents in advance.

Work at the intersection of Beverly Park & Shelby Roads will include the installation of several manholes requiring excavation of up to 30 feet. The intersection will be closed to accommodate this from July 16th to August 6th. Crews will also address restoration of areas impacted by the construction and clean up along the project route. A final paving overlay will take place from 52nd to Hwy 99 in late summer.